

Equitable Communities: Pathways to Success



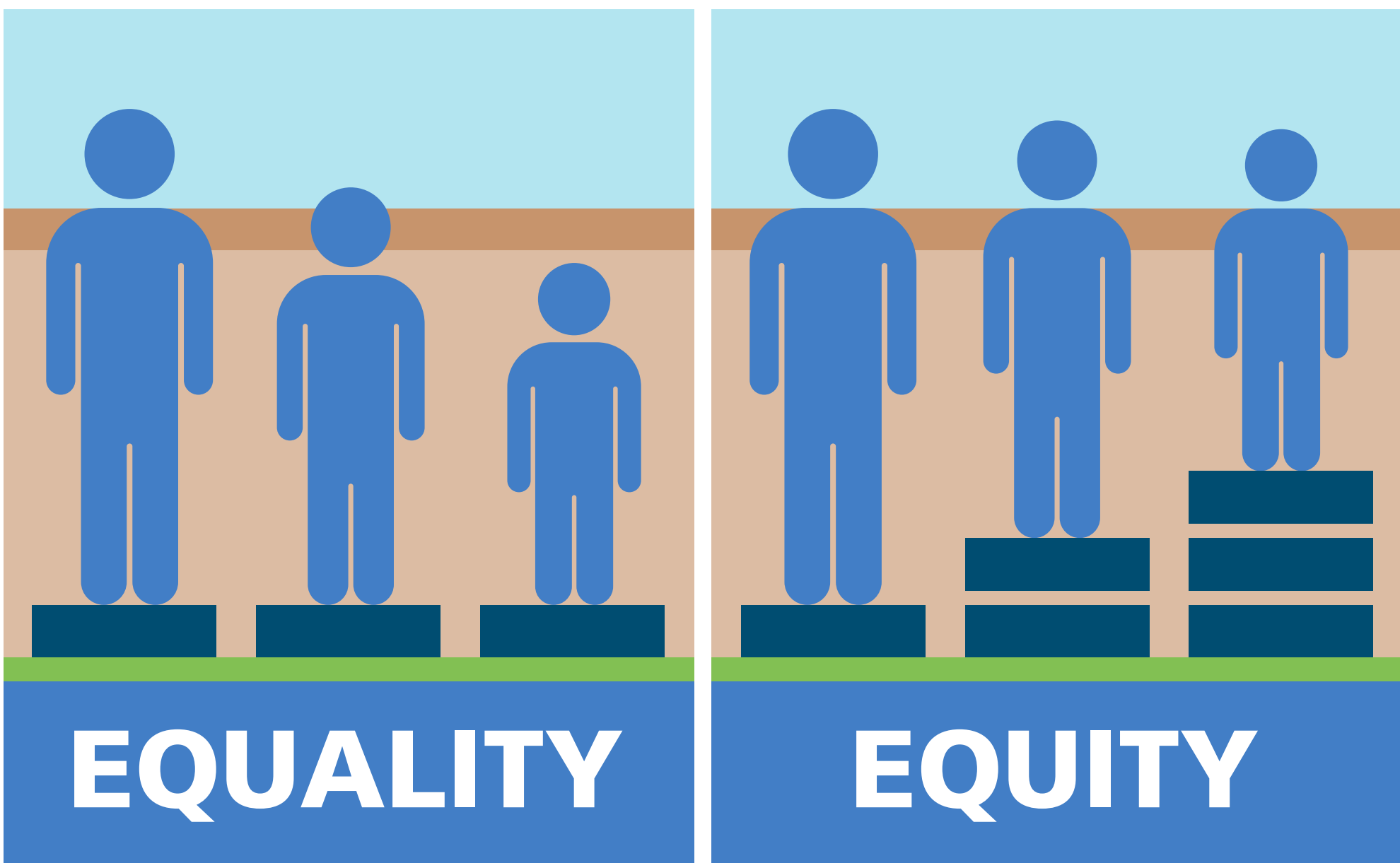
How can land use planning affect equity?

Equity means everyone has fair access to resources and opportunities, including housing, transportation, jobs, education, amenities, recreation, a clean, healthy environment, natural areas and parks, and climate resilient spaces and places. Applying an “equity lens” to land use planning means supporting awareness, understanding and suitable opportunities for people to participate to help:

- Foster an inclusive community;
- Support equity-deserving groups facing historic or systemic discrimination;
- Make certain no one is left behind and everyone benefits; and
- Ensure everyone has a voice in shaping the community where they live.

What are we doing today?

- The City is updating its social development strategy with a holistic approach that supports the creation of a more inclusive, thriving community.
- City processes seek to engage community members in civic decision-making (e.g., advisory committees, public meetings, Public Hearings).
- The growing needs of residents are supported by prioritizing public and private (e.g., developer) investment in areas experiencing the greatest change.
- The City adopted *Enhanced Accessibility Design Guidelines* in 2018, to promote accessibility in City facilities, and the *Richmond Accessibility Plan* in 2023, to guide the removal of barriers experienced by people with disabilities in accordance with the Accessible British Columbia Act.



Equity vs. Equality

Equality

Equality gives people the same resources or opportunities regardless of their needs.

Equity

Equity recognizes that each person is different and provides them with the right resources and opportunities to be successful.

What are the challenges?	What does 2050 look like?	How can we get there?
It is hard for equity-deserving groups to make their voices heard and participate in shaping where they live.	Richmond is an inclusive community shaped by diverse voices, including equity-deserving groups, who contribute to a strong sense of community and social connections.	1 Prepare an equity-based community planning engagement toolkit
In downtown, high rents and redevelopment are displacing non-profit organizations that support members of equity-deserving groups; while, outside downtown, residents and facilities are dispersed, which can make it hard for people to access the services they need.	Across the city, an “equity lens” ensures that growth contributes to inclusive urban villages that connect people with their daily needs (e.g., transit, healthy food stores, parks, community centres), including access to non-profit organizations and services for members of equity-deserving groups.	2 Prepare an equity-based land use and development strategy
Dispersed people and places, car-oriented neighbourhoods and accessibility barriers (e.g., missing sidewalk ramps) can stand in the way of people enjoying and thriving in the city’s natural and built environments.	A coordinated and comprehensive City approach to accessibility ensures that new public and private buildings, open spaces and infrastructure can be enjoyed by everyone regardless of their abilities.	3 Prepare an accessibility implementation framework

Equitable Communities: Pathways to Success

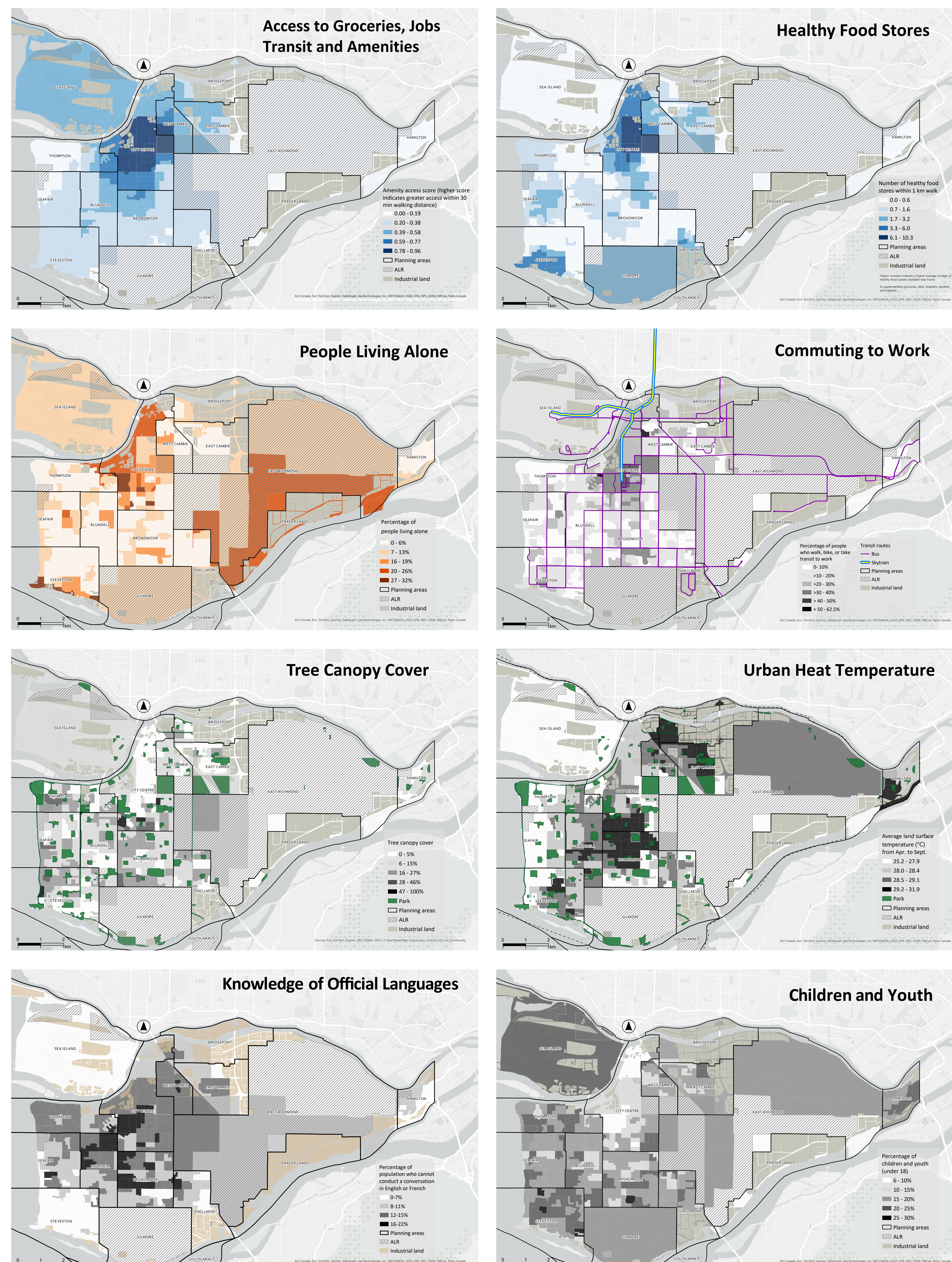


Equity Mapping

The first step towards a more equitable community is to understand the geographic distribution of equity in Richmond. The City has begun to map various social, economic and other indicators. Below are some examples based on various 2021 data sources (e.g., Canada Census) showing scattered patterns. In general, this indicates that, while some areas may be better served than others, there is no clear imbalance between various areas.

Next Steps

The City will engage with equity-deserving groups to understand their lived experiences, enrich the City's understanding, support partnerships, and help inform how to move towards a more inclusive Richmond.



What happens next?

Prepare an equity-based community planning engagement toolkit

Help partner with and engage equity-deserving groups in civic decision-making.

Prepare an equity-based land use and development strategy

Apply an equity lens to guide and help champion social, economic, environmental and cultural equity through land use and development decision-making.

Prepare an accessibility implementation framework

Coordinate and optimize the City's execution of its accessibility guidelines and technical specifications and help to advance the Richmond Accessibility Plan 2023-2033.

What else can we do?

Align policies with an Indigenous Relations Strategy

Once adopted by Council to advance reconciliation with local Indigenous Peoples

Incentivize Developer-Funded Community Spaces

In Local Villages (e.g., through density bonusing), to accommodate the cost-effective delivery of village-oriented services (e.g., neighbourhood house, community kitchen, adult daycare) by the City, non-profits and similar interests.