

Growth Management Roadmap: Pathways to Success

What levers can the City use?

The Growth Management Roadmap looks ahead to how the City can accommodate growth, while staying true to its goal of becoming more sustainable, inclusive and complete. Jurisdictions with demonstrated success, especially in the context of an expensive or volatile market, generally rely on clear development parameters

(e.g., use, density, location, built form) that help reduce risk, increase public support and streamline development. The Growth Management Roadmap identifies three levers to encourage the right growth in the right place, encourage investment, and optimize positive community outcomes.



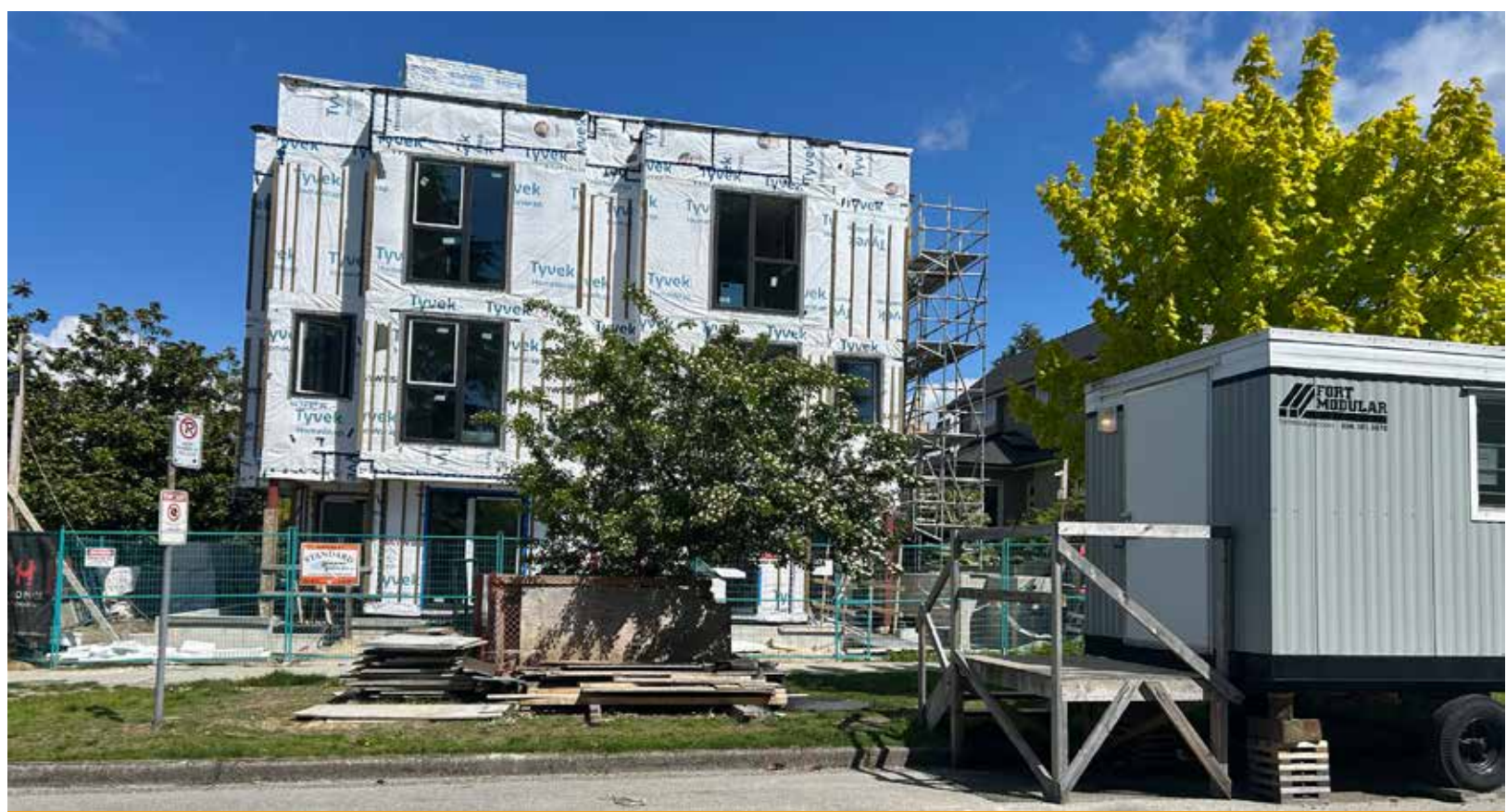
Leverage Private Development

Facilitate private developers and others to deliver more housing and complete, resilient, equitable communities where new and existing residents need them most via **land use policies that set clear expectations and reduce risk, time, cost and speculation.**



Leverage City Resources

Incentivize private developers and others to deliver better affordability, equity, accessibility, resiliency and ecological function via **land use policies that encourage higher development standards and improved outcomes.**



Leverage Partnerships

Remove barriers to government, non-profit and other investment in those people, places and spaces that are most in need via **land use policies that prioritize enhanced affordability, equity and sustainability outcomes.**

1

What is success?

We build MORE ...

- Housing supply and options
- Walkable, transit-oriented villages
- Appealing ways to move without a car
- Green buildings and infrastructure

2

What is success?

We build BETTER ...

- Housing that more people can afford
- Communities with housing, healthy food, jobs, amenities and transit for everyone
- Public and private places and spaces that are low-carbon, climate-resilient, connected, and biodiverse

3

What is success?

We build BEST with ...

- More government and non-profit investment in housing for low-income households
- Engaged residents and others, including diverse and seldom-heard voices
- A culture of climate resiliency and environmental stewardship