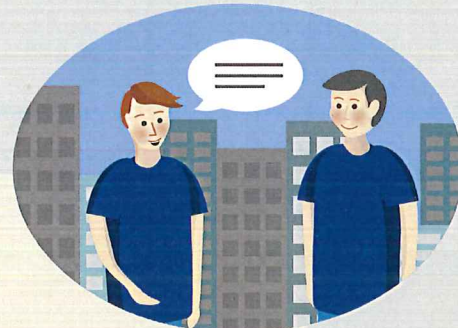


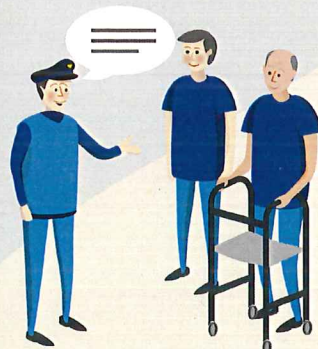
**A dementia-friendly community focuses on the inclusion of people living with dementia and stigma reduction.**

They are defined by their social characteristics. For example, city staff are dementia educated, able to recognize and communicate effectively with a person living with dementia.



They are also defined by physical characteristics. For example, clear and legible signage is placed at eye level, well-kept streets and easy-to-use street furniture in styles familiar to people.

Social and physical attributes can help support people living with dementia by reducing anxiety, stigma or frustration.



Ideally, each community member is educated about dementia and knows that a person living with dementia may sometimes experience the world differently.



Ultimately, people living with dementia feel supported by individuals, business and local governments.