



## Staff Report

### Origin

Since 2005, staff and the Thompson Community Association have been working together to develop enhancements to Burnett Thompson Park which meet a broad, inclusive set of objectives for a youth centred space in the park. This initiative evolved from the Thompson Community Association's commitment to Youth and earlier initiatives in the City around a 'skate spot' in City Centre.

The purpose of this report is to seek endorsement for the Thompson Youth Park Concept plan, identifying current and future funding sources and to respond to the Council term goal to, "*Ensure Richmond remains a safe and desirable community to live, work and play.*"

### Analysis

The concept for the Thompson Youth Park is in accordance with the strategic directions of the Youth Service Plan 2008 to 2012. It addresses two strategic directions;

#### *Strategic Direction #3 - Increased Opportunities for Youth*

"Youth will have access to an increased number of recreational, social and cultural opportunities that are geared towards their specific interests and needs."

#### *Strategic Direction #8 - Dedicated Safe & Social Spaces*

"City spaces will be designed and operated in a way that promotes social gathering and safety."

Through the active participation of youth and Thompson Community Association members, specific objectives for the Youth Park have been identified:

1. To develop an active recreation and social gathering place that will appeal to the youth who are regular users of Thompson Burnett Community Park. Presently, high school aged youth use the children's playground located in the centre of the park between Burnett Secondary School and the Community Centre, at times displacing younger children from the playground.
2. To create a strong sense of identity for the park, an identity that youth can relate to.
3. To construct a skate spot in the form of a plaza with skateable elements.
4. To create a gathering place for the community that will be adaptable for special event use.

A consultant team was retained by the City to develop a conceptual plan that has been developed with full participation by representative youth and the Thompson Community Association that addresses the objectives (attachment #1). The design features a mix of active uses such as "play" equipment geared to youth and the skate spot elements, social gathering places and seating areas, and iconic forms and features that will project a strong identity for the park. The design has been

guided by CPTED principles (Crime Prevention Through Environmental Design). The plan is intended to be constructed in 3 phases (attachment #2):

*Phase 1 – Older Ages Activity Area*

The Thompson Community Association Board has identified this phase as their top priority to be constructed in 2010. The Board has indicated to staff that they will fund this phase to a maximum of \$250,000.

The design for this area is centred around the existing bouldering elements to create more opportunities for informal physical activity. The central feature, the Corocord Eurythmos, is a low climbing net structure with a trampoline-like centre. At 14 metres in diameter, it has a large capacity in terms of the number of users at any one time and in terms of the intensity of use.

*Phase 2 – Plaza with Skatable Elements*

This phase is proposed to be funded by the City and constructed in 2011. The budget of \$250,000 is identified in the current 5 year Capital Plan.

The plaza consists of unique concrete elements designed to provide engaging skateboard elements and are integrated into the plaza so that the space can also be used for community gatherings and special events. The design will impart an urban character and reinforce the unique identity of the park and community centre.

*Phase 3 - Seating and Landscaping*

The final phase will strengthen the linkages between the surrounding park uses (the basketball courts, existing playground and pedestrian routes through the park) and focuses on the seating and completion of the social spaces. The funding source for this phase has not been identified as yet but it is proposed that the City and the Community Association consider funding the construction jointly in 2012. The estimated budget for Phase 3 is \$315,000.

**Next Steps**

Public consultation with the general public and with the immediate neighbourhood can now be undertaken since the concept has been developed to the point that the features can be clearly described and understood. An open house format with City staff, Association Board members and the consultant team present to provide information and receive public comment is suggested as the most effective means of proceeding.

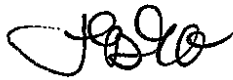
The City will continue to retain the consultant team to refine the concept according to the input received during the consultation and to proceed to detailed design and construction documentation.

**Financial Impact**

Consultant fees of \$15,000 will allow for the implementation of Phase 1 of the plan and ensure the seamless integration of Phase 2. The funding source for consulting fees will be from existing Parks Advanced Design funds.

**Conclusion**

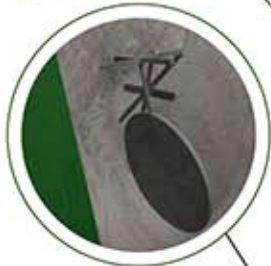
The Thompson Youth Park concept provides a plan for an enhanced outdoor space which will ensure greater opportunities for youth in the City. The generous support of the Thompson Community Association in funding Phase 1 of the plan will ensure this project can begin, pending the outcome of public consultation, in 2010. Future phases will be the subject of capital submissions in 2011 and beyond.



Jamie Esko  
Park Planner, Parks Planning and Design  
(604-233-3341)

JE:je

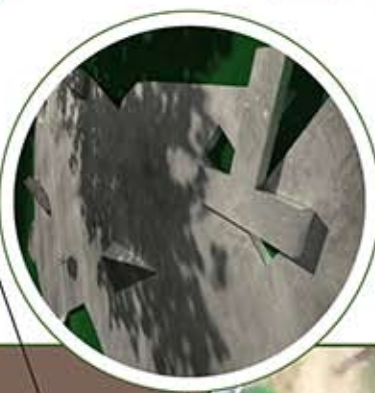
# Attachment #1



Metal sign structure provides a unique obstacle for stake boarding.



Sculptural ramps provide a unique character for the plaza.



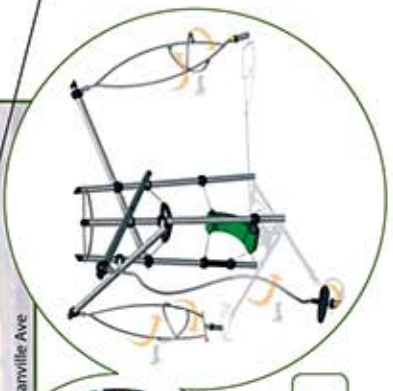
The plaza is integrated with the play space and bordered with a variety of social spaces.



Eurhythmos structure provides collaborative play experiences.



Play elements provide motion and physical challenge.



The existing climbing boulders are integrated into the design.

The overhead shade structure acts as a gateway between the play area and the basketball courts. A unique pattern in the overhead trellis creates an interesting shadow pattern.

The play features promote physical challenges for the youth that are unique and fun.

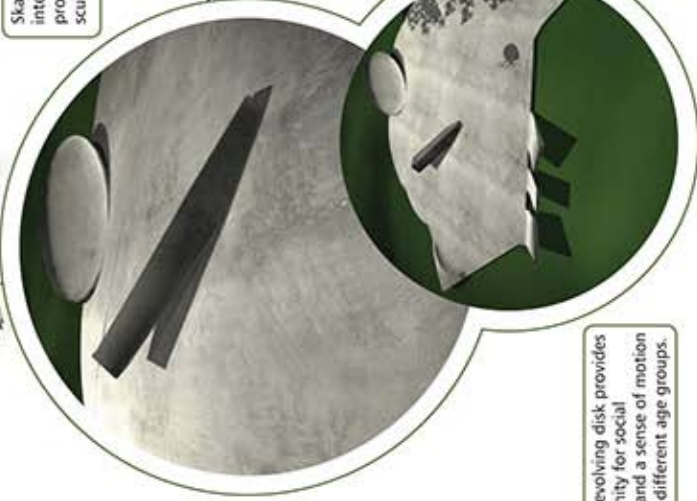
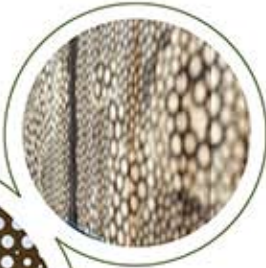
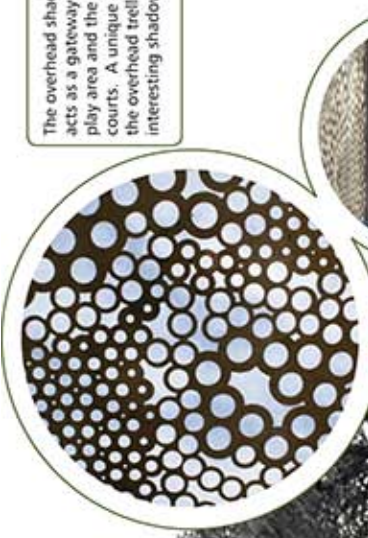
Skatable elements are integrated into the plaza providing interesting sculptural shapes.

Opportunities for seating and people watching are integrated throughout the park. The hill side amphitheatre is focused towards the plaza.

The plaza has an urban character and provides a unique identity for the area.

The Giant Revolving disk provides an opportunity for social interaction and a sense of motion suitable for different age groups.

Spinning dish promotes social interaction and teamwork.



# Attachment #2

