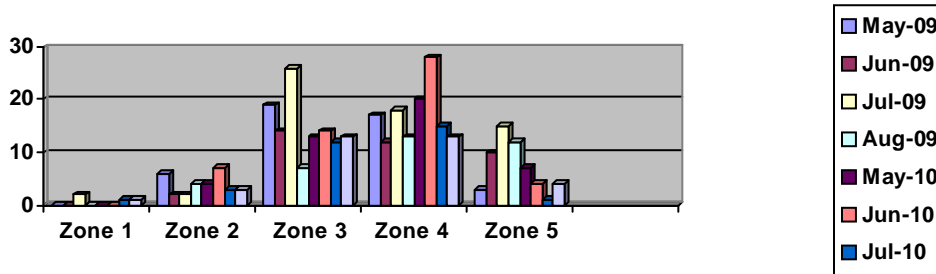




Richmond RCMP Business Watch aims at enhancing communication between the Police and the business community in order to reduce crime. Our goal is to provide the business community with crime prevention tips to help protect their assets and create a safe working environment.

Commercial Break and Enters for: May, June, July and August 2009 & 2010



Richmond Zone Map



Most Common Points of Entry: Doors and Windows

Ensure your exterior doors have.....

Good quality deadbolts (with 1 1/2 inch throw – the throw is the part that extends into the door frame when locked) on all exterior doors.



Install anti-pry plates on all exterior doors. Anti-pry plates are bolted to the door and cover the crack between the door and the door frame.

Security film or plexiglass should be installed on glass doors or windows near the door locks to reinforce the glass.

For more business security tips, please visit www.richmond.ca/businesswatch.
 To receive email alerts of neighbourhood commercial break and enters, register your business name and address at RCMP_Business_Watch@richmond.ca.
 For a free business security assessment call: 604-207-4790.