



**Road Closure and Removal of Road Dedication
(adjacent to 5891 & 5931 No. 3 Road) Bylaw**

The Council of the City of Richmond enacts as follows:

1. The lands shown cross-hatched on the Reference Plan prepared by Matson Peck & Topliss, BCLS attached as Schedule A shall be stopped up and closed to traffic, cease to be a public road and the road dedication shall be removed.
2. The lands shall be consolidated with the adjoining lands at 5891 & 5931 No. 3 Road, Richmond.
3. This Bylaw is cited as **“Road Closure And Removal of Road Dedication Bylaw 8424”**.

FIRST READING

SEP 22 2008

SECOND READING

SEP 22 2008

THIRD READING

SEP 22 2008

DULY ADVERTISED

OCT 18 2008 OCT 25 2008

ADOPTED

CITY OF RICHMOND
APPROVED for content by originating dept.
APPROVED for legality by Solicitor

MAYOR

CORPORATE OFFICER

REFERENCE PLAN TO ACCOMPANY THE CITY OF RICHMOND ROAD CLOSING AND REMOVAL OF ROAD DEDICATION BYLAW No. 8424 OF PORTIONS OF ROAD DEDICATED BY PLAN 25000 AND PLAN 25476 SECTION 5 BLOCK 4 NORTH RANGE 6 WEST NWD

BCGS 926.015

PURSUANT TO SECTION 120 LAND TITLE ACT AND SECTION 40 COMMUNITY CHARTER

PLAN BCP

REF. No. _____

DEPOSITED IN THE LAND TITLE OFFICE
AT NEW WESTMINSTER, B.C.

THIS DAY OF _____ 20__

REGISTRAR

PARTS OF ROAD CLOSED:

PARCEL A BEING PART OF ROAD DEDICATED ON PLAN 25476 Sec 5 Bk4N R6W 236.8 m²
PARCEL B BEING PART OF ROAD DEDICATED ON PLAN 25000 Sec 5 Bk4n R6W 496.0 m²

TOTAL: 732.8 m²

LEGEND

SCALE 1:400



ALL DISTANCES ARE IN METRES.

- INDICATES CONTROL MONUMENT FOUND
- INDICATES STANDARD IRON POST FOUND
- INDICATES STANDARD IRON POST PLACED
- INDICATES LEAD PLUG FOUND
- INDICATES LEAD PLUG PLACED

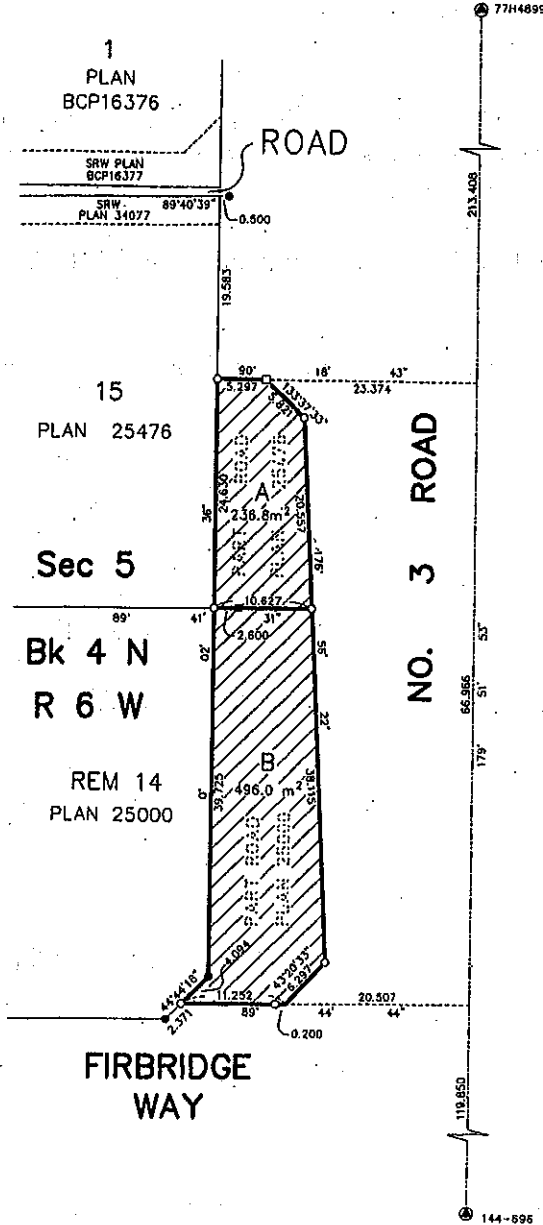
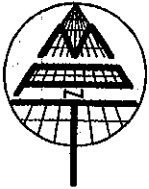


INDICATES PORTIONS OF ROAD TO BE CLOSED

INTEGRATED SURVEY AREA NO. 18, CITY OF RICHMOND NA083 (CSRS) GRID BEARINGS ARE DERIVED FROM OBSERVATIONS BETWEEN GEODETIC CONTROL MONUMENTS 77H4899 AND 144-896.

THIS PLAN SHOWS HORIZONTAL GROUND-LEVEL DISTANCES EXCEPT WHERE OTHERWISE NOTED. TO COMPUTE GRID DISTANCES, MULTIPLY GROUND-LEVEL DISTANCES BY COMBINED FACTOR 0.9996040.

WITNESS OR OFFSET POSTS ARE ON PROPERTY LINE PRODUCTION UNLESS NOTED OTHERWISE.



THIS PLAN LIES WITHIN THE GREATER VANCOUVER REGIONAL DISTRICT

MATSON PECK & TOPLISS

SURVEYORS & ENGINEERS

#320 - 11120 HORSESHOE WAY

RICHMOND, B.C.

V7A 5H7

PH: 604.270.9331

FAX: 604.270.4137

CADFILE: 15069-REF-RC.DWG

R-08-15069-REF-RC

OFFICER SIGNATURE(S)

SIGNATURE

(PRINT NAME)

COMMISSIONER FOR
TAKING AFFIDAVITS FOR B.C.
CITY OF RICHMOND
6911 NO. 3 ROAD
RICHMOND, B.C. V6Y 2C1
278-4000
AS TO THE SIGNATURE OF
DAVID WEBER

EXECUTION DATE

Y	M	D

PARTY(ES) SIGNATURE(S)

CITY OF RICHMOND
BY ITS AUTHORIZED SIGNATORY

MALCOLM D. BRODIE
MAYOR, AUTHORIZED SIGNATORY

DAVID WEBER
CORPORATE OFFICER, AUTHORIZED SIGNATORY

I, HANS J. TROELSEN, A BRITISH COLUMBIA LAND SURVEYOR, OF THE CITY OF RICHMOND, IN BRITISH COLUMBIA, CERTIFY THAT I WAS PRESENT AT AND PERSONALLY SUPERINTENDED THE SURVEY REPRESENTED BY THIS PLAN, AND THAT THE SURVEY AND PLAN ARE CORRECT. THE FIELD SURVEY WAS COMPLETED ON THE ____ TH DAY OF _____ 2008. THE PLAN WAS COMPLETED AND CHECKED, AND THE CHECKLIST FILED UNDER # _____ ON THE ____ TH DAY OF _____ 2008.