



Highway Closure and Removal Dedication (Capstan Way Lane and Sexsmith Road) Bylaw

The Council of the City of Richmond enacts as follows:

1. The lands described as Parcels A, B & C on the Reference Plan prepared by J.C. Tam and Associated, BCLS attached as Schedule A shall be stopped up and closed to traffic, cease to be a public highway and the highway dedication shall be removed.
2. Parcels A, B & C shall be disposed of to Pinnacle International or its designate for consolidation with their adjoining development lands.
3. This Bylaw is cited as "**Highway Closure and Removal of Highway Dedication Bylaw 8220**".

FIRST READING

MAY 08 2007

SECOND READING

MAY 08 2007

THIRD READING

MAY 08 2007

DULY ADVERTISED ON

AUG 23 2008, AUG 30 2008

MINISTRY OF TRANSPORTATION APPROVAL

MAY 31 2007

ADOPTED

CITY OF RICHMOND
APPROVED for content by originalting
<i>JR</i>
APPROVED for legality by Solicitor
<i>Cme</i>

MAYOR

CORPORATE OFFICER

REFERENCE PLAN TO ACCOMPANY CITY OF RICHMOND
 ROAD CLOSURE BY-LAW #8220 OF
 1) PART ROAD DEDICATED BY THE DEPOSIT OF PLAN 3404
 2) PART ROAD DEDICATED BY THE DEPOSIT OF PLAN LMP11315
 3) PART ROAD DEDICATED BY THE DEPOSIT OF PLAN LMP47719
 ALL OF BLOCK 5 NORTH RANGE 6 WEST
 NEW WESTMINSTER DISTRICT
 B.C.G.S. 920.015

PLAN BCP _____

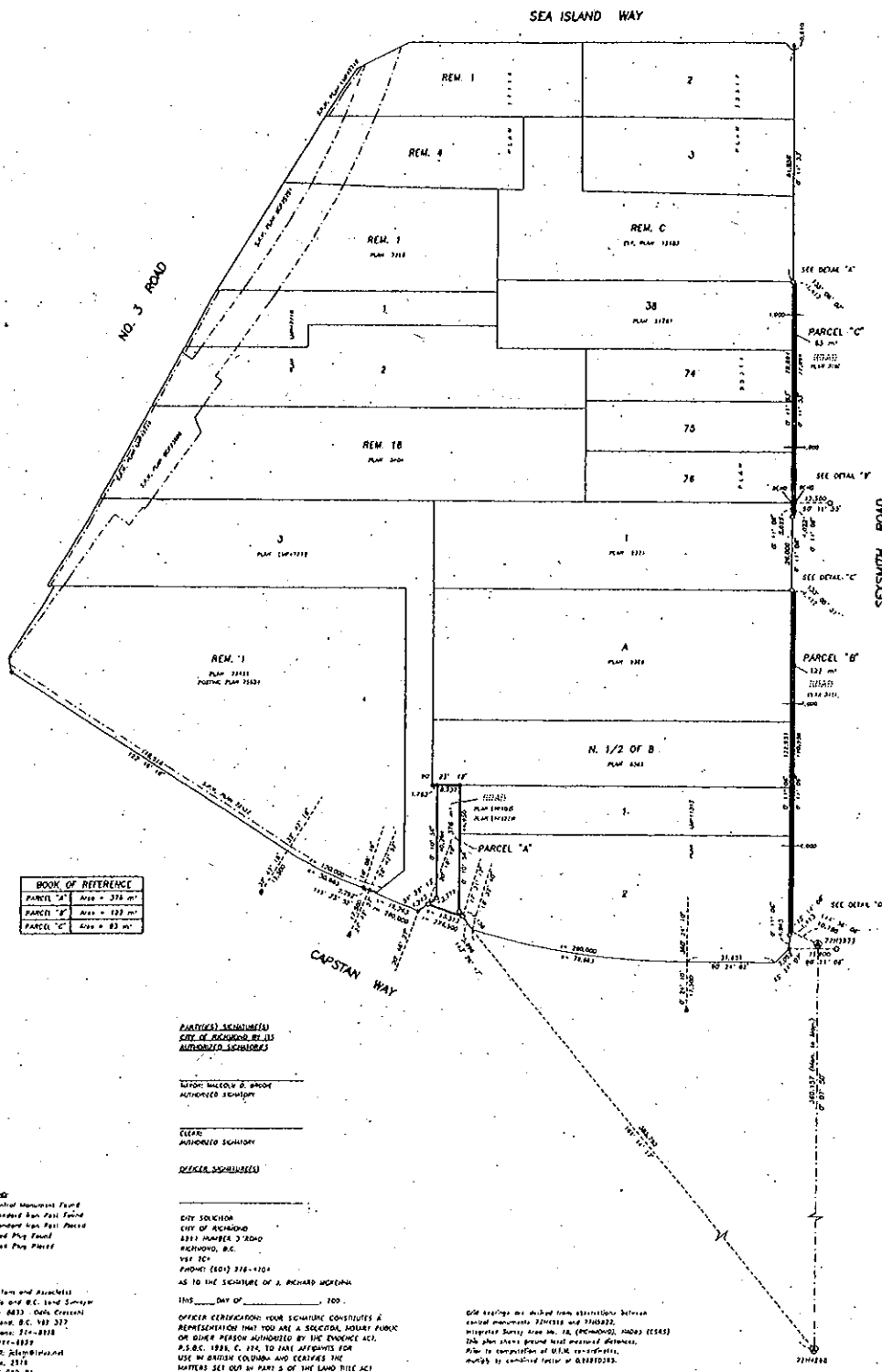
Drawn by the Land Survey Office
 of New Westminster, B.C. the _____ day
 of _____ 2007.

Drawn by _____
 Date _____

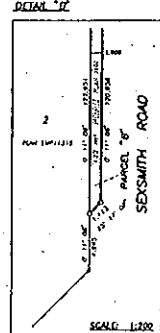
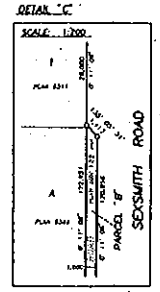
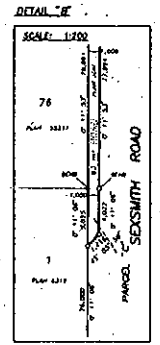
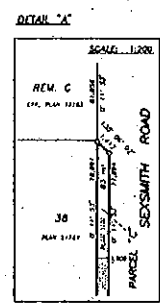
This plan was shown to the Greater Vancouver Regional District



SCALE 1:750
 15 10 5 0 5 10 15 20 25 30 35 40
 ALL DIMENSIONS ARE IN METRES AND DECIMALS
 THEREOF UNLESS OTHERWISE INDICATED



BOOK OF REFERENCE	
PARCEL "A"	Area = 276.00 m ²
PARCEL "B"	Area = 122.00 m ²
PARCEL "C"	Area = 83.00 m ²



PARTIES SIGNATURES
 CITY OF RICHMOND, BY ITS
 AUTHORIZED SIGNATURES

 LUTON WILCOX & BROWN
 AUTHORIZED SIGNATURE

 CLERK
 AUTHORIZED SIGNATURE

DEVELOPER SIGNATURES

 CITY SENSATION
 CITY OF RICHMOND
 2881 NUMBER 3 ROAD
 RICHMOND, B.C.
 V6X 3C1
 PHONE: (604) 278-1104

AS TO THE SIGNATURE OF J. RICHARD WARDEN
 THIS _____ DAY OF _____ 2007.

LEGEND
 (M) Existing Monument Found
 (S) Situated from Post Found
 (O) Situated from Post Found
 (L) Lost Post Found
 (D) Lost Post Found

J. C. Tom and Associates
 115 - 8833 Oak Street
 Richmond, B.C. V6V 3J7
 Telephone: 278-8888
 Fax: 278-8888
 E-mail: jct@jct.com
 Job No. 2515
 78-35 P10-91
 Drawn By: EA

OUR OFFICE OR FIELD FROM STATIONED BETWEEN
 2007 MONUMENTS 278882 AND 278883.
 INTERIOR SURVEY AREA IS A (NEWMOND) (MND) (2585)
 THIS PLAN SHOWS BEING USED MEASURED DISTANCES.
 PLAN TO COMPLETION OF DEMONSTRATION,
 SUBJECT TO COMPLETION OF DEMONSTRATION.

J. JOHNSON C. TAY, R.C.L.S.