



**Road Closure and Removal of Road Dedication
(Portion of 5th Avenue at Richmond Street) Bylaw 8569**

The Council of the City of Richmond enacts as follows:

1. The lands legally described as Portion of Road Dedicated by Plan 249 Section 3 Block 3 North Range 7 West New Westminster District (shown boldly outlined on the Reference Plan prepared by Matson Peck & Topliss, British Columbia Land Surveyors attached as Schedule A) shall be stopped up and closed to traffic, cease to be a public road and the road dedication shall be removed.
2. This Bylaw is cited as **“Road Closure And Removal of Road Dedication Bylaw 8569”**.

FIRST READING

APR 12 2010

SECOND READING

APR 12 2010

THIRD READING

APR 12 2010

DULY ADVERTISED

APR 15 2010 APR 22 2010

ADOPTED

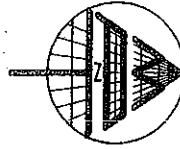
CITY OF RICHMOND
APPROVED for content by originating dept.
APPROVED for legality by Solicitor

MAYOR

CORPORATE OFFICER

REFERENCE PLAN TO ACCOMPANY THE CITY OF RICHMOND ROAD CLOSING AND REMOVAL OF ROAD DEDICATION BYLAW No.8569 OF PORTION OF ROAD DEDICATED BY PLAN 249 SECTION 3 BLOCK 3 NORTH RANGE 7 WEST NEW WESTMINSTER DISTRICT

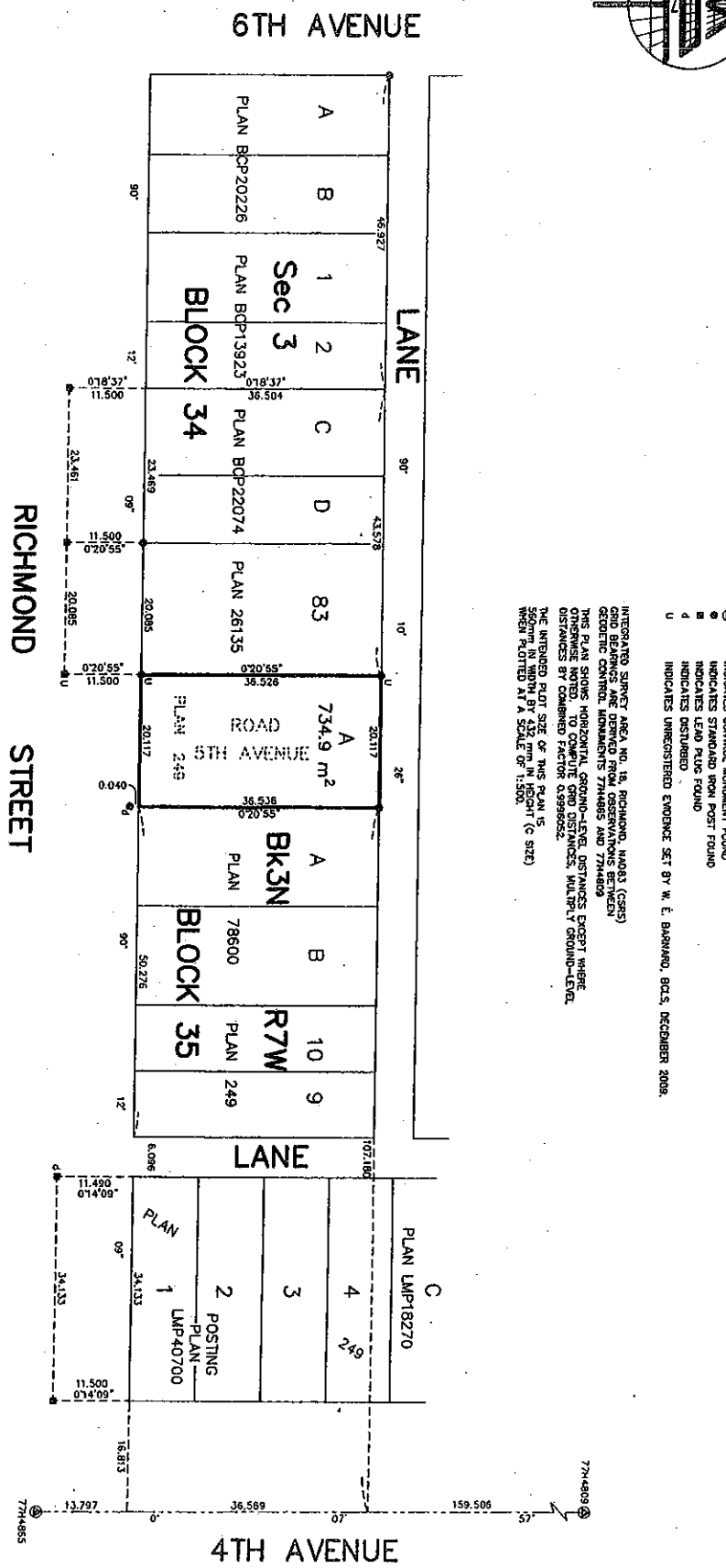
BCGS 926.015
PURSUANT TO SECTION 120 LAND TITLE ACT AND SECTION 40, COMMUNITY CHARTER



LEGEND
SCALE 1:500
ALL DISTANCES ARE IN METRES.

- INDICATES CONTROL MONUMENT FOUND
- INDICATES STAMPOED IRON POST FOUND
- INDICATES LEAD PILE FOUND
- INDICATES DESTROYED
- U INDICATES UNREGISTERED EVIDENCE SET BY W. E. BARNARD, B.C.S., DECEMBER 2009.

INTEGRATED SURVEY AREA NO. 18, RICHMOND, M003 (CERS) GRID BEARINGS ARE DERIVED FROM OBSERVATIONS BETWEEN SCIENTIFIC CONTROL MONUMENTS 7744855 AND 7744809 THIS PLAN SHOWS HORIZONTAL GROUND-LEVEL DISTANCES EXCEPT WHERE OTHERWISE NOTED. DISTANCES IN PARENT PLANS, MULTIPLY GROUND-LEVEL DISTANCES BY COMBINED FACTOR 0.9999242. THE UNREGISTERED PLAT SIZE OF THIS PLAN IS 560MM IN WIDTH BY 840MM IN HEIGHT (A SIZE) WHEN PLOTTED AT A SCALE OF 1:500.



PLAN BCP
REF. No. _____
DEPOSITED IN THE LAND TITLE OFFICE AT NEW WESTMINSTER, B.C. THIS DAY OF _____ 20

REGISTRAR

THIS PLAN LIES WITHIN THE GREATER VANCOUVER REGIONAL DISTRICT

I, L. STEPHEN CAMPBELL, A BRITISH COLUMBIA LAND SURVEYOR, OF PORT COQUILA, IN BRITISH COLUMBIA, CERTIFY THAT I WAS PRESENT AT AND PERSONALLY SUPERINTENDED THE SURVEY REPRESENTED BY THIS PLAN, AND THAT THE SURVEY AND PLAN ARE CORRECT. THE FIELD SURVEY WAS COMPLETED ON THE 20TH DAY OF JANUARY, 2010. THE PLAN WAS COMPLETED AND CHECKED, AND THE CHECKLIST FIED UNDER F103935 ON THE 20TH DAY OF JANUARY, 2010.

MAITSON PECK & TOPLUSS
SURVEYORS & ENGINEERS
#320 - 11120 HORSESHOE WAY
RICHMOND, B.C., V7A 5M7
PH: 604-270-9331
FAX: 604-270-4137
CADFILE: 18256-001-REF-RC-0002.OWG
R-10-16256-REF-RC

OFFICER SIGNATURE(S)
SIGNATURE _____
(PRINT NAME)
COMMISSIONER FOR B.C. TAXING AUTHORITY FOR RICHMOND
6811 163 STREET
RICHMOND, B.C. V6V 2C1
276-4000
AS TO THE SIGNATURE OF DAVID WEBER

PARTY(ES) SIGNATURE(S)
CITY OF RICHMOND
BY ITS AUTHORIZED SIGNATORY

DAVID WEBER
CORPORATE OFFICER
AUTHORIZED SIGNATORY

EXECUTION DATE

Y	M	D

Stephen Campbell
B.C.L.S.