



**Road Closure and Removal of Road Dedication
(Portion of 3rd Avenue at Richmond Street) Bylaw 8565**

The Council of the City of Richmond enacts as follows:

1. The lands legally described as Portion of Road Dedicated by Plan 249 Section 3 Block 3 North Range 7 West New Westminster District (shown boldly outlined on the Reference Plan prepared by Matson Peck & Topliss, British Columbia Land Surveyors attached as Schedule A) shall be stopped up and closed to traffic, cease to be a public road and the road dedication shall be removed.
2. This Bylaw is cited as **“Road Closure And Removal of Road Dedication Bylaw 8565”**.

FIRST READING

APR 12 2010

SECOND READING

APR 12 2010

THIRD READING

APR 12 2010

DULY ADVERTISED

APR 15 2010 APR 22 2010

ADOPTED

CITY OF RICHMOND
APPROVED for content by originating dept.
APPROVED for legality by Solicitor

MAYOR

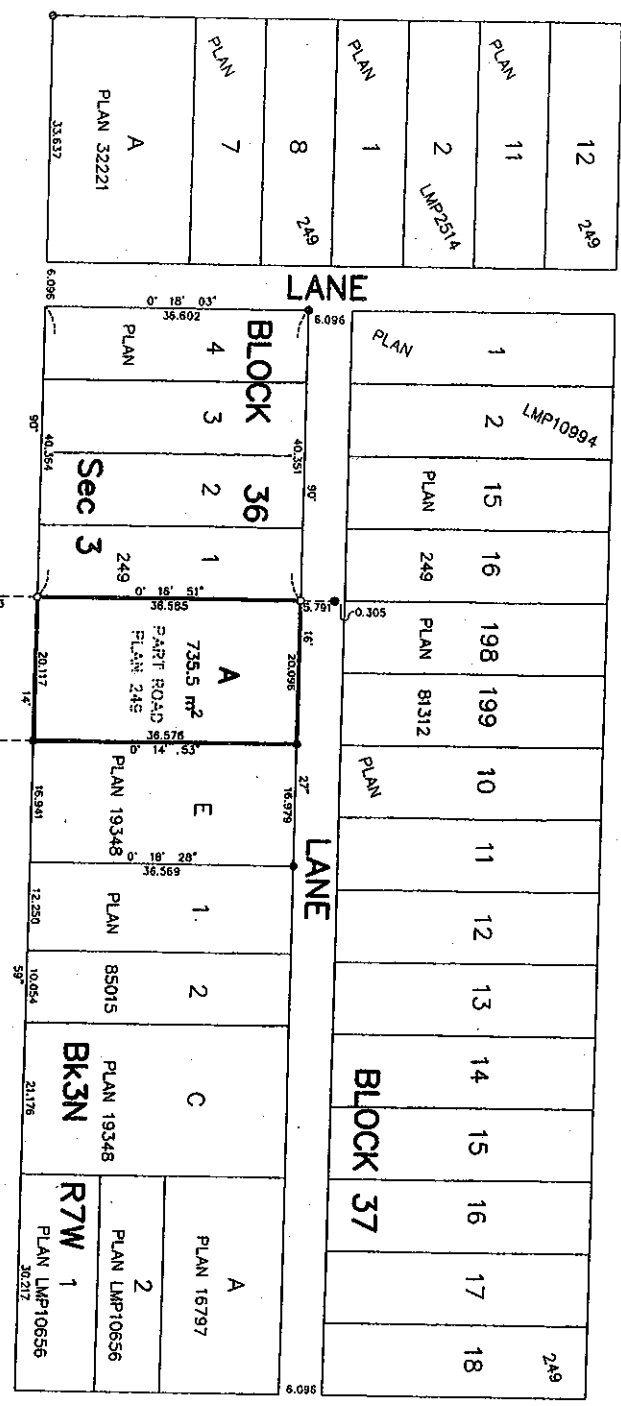
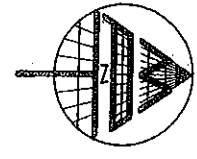
CORPORATE OFFICER

REFERENCE PLAN TO ACCOMPANY THE CITY OF RICHMOND ROAD CLOSING AND REMOVAL OF ROAD DEDICATION BYLAW No. 8565 OF PORTION OF ROAD DEDICATED BY PLAN 249 SECTION 3 BLOCK 3 NORTH RANGE 7 WEST NEW WESTMINSTER DISTRICT

BCGS 92G.015
PURSUANT TO SECTION 120 LAND TITLE ACT AND SECTION 40, COMMUNITY CHARTER

PLAN BCP
REF. No. _____

DEPOSITED IN THE LAND TITLE OFFICE AT NEW WESTMINSTER, B.C. THIS _____ DAY OF _____ 20__



LEGEND
SCALE 1:500



- ALL DISTANCES ARE IN METRES
- INDICATES CONTROL MONUMENT FOUND
- INDICATES STANDARD IRON POST FOUND
- INDICATES STANDARD IRON POST PLACED

INTEGRATED SURVEY AREA NO. 18, RICHMOND, MAJORS (SRS) GEODETIC CONTROL MONUMENTS 774885 AND 774894 THE PLAIN STONE HORIZONTAL GROUND-LEVEL DISTANCES EXCEPT WHERE OTHERWISE INDICATED ARE MEASURED TO THE CENTRE OF THE MONUMENTS. MULTIPLE GROUND-LEVEL DISTANCES BY COMBINED FACTORS OF 1:500. THE INTENDED PLOT SIZE OF THIS PLAN IS 500mm IN WIDTH BY 432mm IN HEIGHT WHEN PLOTTED AT A SCALE OF 1:500.

OFFICER SIGNATURE(S)
SIGNATURE

EXECUTION DATE

Y	M	D
---	---	---

PARTY(IES) SIGNATURE(S)
CITY OF RICHMOND
BY ITS AUTHORIZED SIGNATORY

MAJORA D. BRODIE
MAYOR, AUTHORIZED SIGNATORY

DAVID WEBER
CORPORATE OFFICER,
AUTHORIZED SIGNATORY

THIS PLAN LIES WITHIN THE GREATER VANCOUVER REGIONAL DISTRICT

I, J. STEPHEN CAMPBELL, A BRITISH COLUMBIA LAND SURVEYOR, OF PORT COQUITTAN, IN BRITISH COLUMBIA, CERTIFY THAT THIS PLAN WAS PRESENTED TO AND PERSONALLY SUPERVISED THE SURVEY AND CHECKED THE FIELD SURVEY AND THAT THE SURVEY AND PLAN ARE CORRECT. THE FIELD SURVEY WAS COMPLETED ON THE 20TH DAY OF JANUARY, 2010. THE PLAN WAS COMPLETED AND CHECKED, AND THE CHECKLIST FLSO UNDER #103992 ON THE 20TH DAY OF JANUARY, 2010.

Stephen Campbell
B.C.L.S.

MATSON PECK & TOPUSS
SURVEYORS & ENGINEERS
8320 - 11120 HORSESHOE WAY
RICHMOND, B.C. V7A 5H7
PH: 604-270-9331
FAX: 604-270-4137
CADFILE: 16235-001-REF-RC-001.DWG
R-09-16235-REF-RC