



**Road Closure and Removal of Road Dedication
(Portion of 5th Avenue at Steveston Highway) Bylaw**

The Council of the City of Richmond enacts as follows:

1. The lands legally described as Portion of Road Dedicated on Plan 249 Section 3 Block 3 North Range 7 West and Section 34 Block 4 North Range 7 West New Westminster District (shown boldly outlined and hatched on the Reference Plan prepared by Matson Peck & Topliss, British Columbia Land Surveyors attached as Schedule A) shall be stopped up and closed to traffic, cease to be a public road and the road dedication shall be removed.
2. This Bylaw is cited as **“Road Closure And Removal of Road Dedication Bylaw 8544”**.

FIRST READING

DEC 14 2009

SECOND READING

DEC 14 2009

THIRD READING

DEC 14 2009

DULY ADVERTISED

JAN 14 2010 JAN 21 2010

ADOPTED

CITY OF RICHMOND
APPROVED for content by originating dept.
APPROVED for legality by Solicitor

MAYOR

CORPORATE OFFICER

REFERENCE PLAN TO ACCOMPANY THE CITY OF RICHMOND ROAD CLOSING AND REMOVAL OF ROAD DEDICATION BYLAW No. 8544 OF PORTION OF ROAD DEDICATED BY PLAN 249 SECTION 3 BLOCK 3 NORTH RANGE 7 WEST AND SECTION 34 BLOCK 4 NORTH RANGE 7 WEST NEW WESTMINSTER DISTRICT

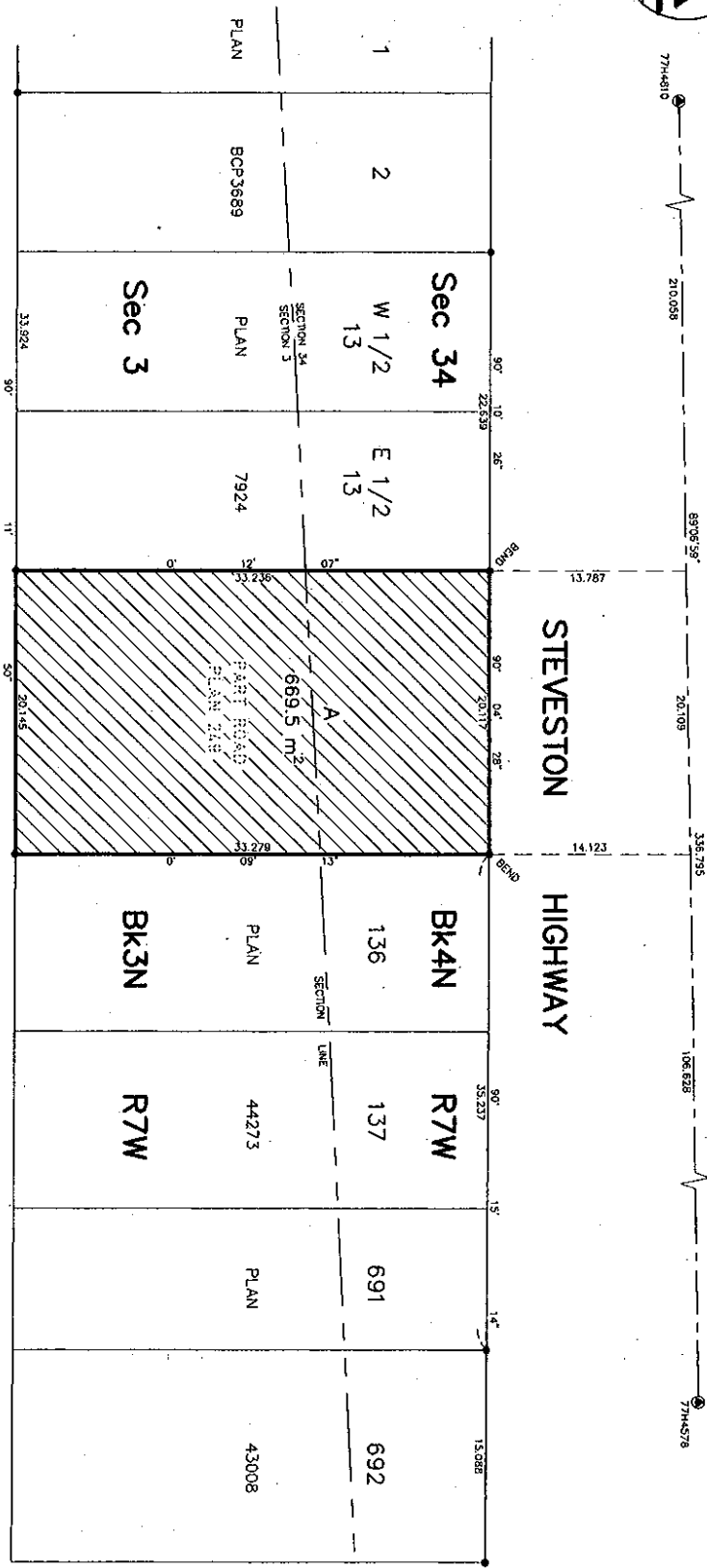
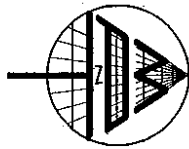
BCGS 926.015
PURSUANT TO SECTION 120 LAND TITLE ACT AND SECTION 40, COMMUNITY CHARTER

PLAN BCP

REF. No. _____

DEPOSITED IN THE LAND TITLE OFFICE AT NEW WESTMINSTER, B.C.
THIS DAY OF _____ 20__

REGISTRAR

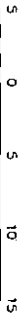


LANE

LANE

LEGEND

SCALE 1:250



ALL DISTANCES ARE IN METRES.

- INDICATES CONTROL MONUMENT FOUND
- INDICATES STANDARD IRON POST FOUND
- ▨ INDICATES PORTION OF ROAD TO BE CLOSED

INTEGRATED SURVEY AREA NO. 18, RICHMOND, NAPOS (SRS) GRID BEARINGS ARE DERIVED FROM OBSERVATIONS BETWEEN GEODETIC CONTROL MONUMENTS 77H4810 AND 77H4578

THIS PLAN SHOWS HORIZONTAL, GROUND-LEVEL, DISTANCES EXCEPT WHERE OTHERWISE NOTED. TO COMPUTE GRID DISTANCES, MULTIPLY GROUND-LEVEL DISTANCES BY CORRECTION FACTOR 0.9998293.

THE INTENDED PLOT SIZE OF THIS PLAN IS 15 METRES BY 15 METRES AT A SCALE OF 1:250

OFFICER SIGNATURE(S)

SIGNATURE

(PRINT NAME)

COMMISSIONER FOR TAKING AFFIDAVITS FOR B.C. CITY OF RICHMOND 6911 NO. 3 ROAD RICHMOND, B.C. V6Y 2E1 278-4400

AS TO THE SIGNATURE OF DAVID WEBER

EXECUTION DATE

Y

M

D

PARTY(S) SIGNATURE(S)

CITY OF RICHMOND BY ITS AUTHORIZED SIGNATORY

MALCOLM D. BRODIE MAJOR, AUTHORIZED SIGNATORY

DAVID WEBER CORPORATE OFFICER, AUTHORIZED SIGNATORY

THIS PLAN LIES WITHIN THE GREATER VANCOUVER REGIONAL DISTRICT

I, I. STEPHEN CAMPBELL, A BRITISH COLUMBIA LAND SURVEYOR, OF FORT COCKBURN, IN BRITISH COLUMBIA, CERTIFY THAT I WAS PRESENT AT THIS PERSONAL SUPERVISION OF THE SURVEY ARE REPRESENTED BY THIS PLAN, AND THAT THE SURVEY AND PLAN ARE CORRECT. THE FIELD SURVEY WAS COMPLETED ON THE _____ DAY OF _____ 2009.

THE PLAN WAS COMPLETED AND CHECKED, AND THE CHECKLIST FILED UNDER # _____ ON _____ DAY OF _____ 2009.

B.C.L.S.

MATSON PECK & TOPUSS
SURVEYORS & ENGINEERS
4300 - 1120 IMPERIAL WAY
RICHMOND, B.C. V7A 5H7
PH: 604-270-9331
FAX: 604-270-4137
CADFILE: 16187-002-REF-RC-000.DWG
R-09-16187-REF-RC