

CRIME PREVENTION

WORKING TOGETHER TO PREVENT CRIME**NEWSLETTER**

Safety Tips for Outdoor Activities

As the weather becomes warmer, people are going outdoors to appreciate the beautiful weather. People may be going out for walks at the park, playing outdoor sports, or biking in their neighbourhood. These are fun activities to do with friends and family, but thieves will often prey on those who are unaware. Below are some outdoor safety tips that can help people enjoy their time while feeling protected.

- Be aware of your surroundings – pay some attention to your surroundings. Thieves often target those who are unaware or distracted.
- Plan ahead – If you are going to an unfamiliar area, do some research on your destination. It is good to have some knowledge of the area in case of emergencies or sudden weather changes.
- Lock your vehicle – Whether you are going to the park or biking along the dyke, remember to lock your vehicle when you step away.
- Close all your car windows – The weather may be getting warmer so it might be tempting to leave your window opened. However, this provides thieves easy access to your car. Remember to close all your windows and sunroof.
- Bring a buddy – If you do not feel safe walking alone, ask a friend or family member to walk with you.
- Keep your belongings close – It is convenient to leave our belongings on the side of the court when we are playing sports or having a picnic. However, it can be a prime opportunity for thieves as we are distracted. Thus, it is recommended to keep your belongings close and in your line of sight.
- Avoid dark areas – stay in well-lit and populated area as many people can see you if you are in trouble.
- Reflective clothing – If you are walking at night, it is recommended to wear something bright or reflective so other people and drivers can see you.
- Valuables in cars – some of our equipment or belongings are in the car when we go out. Keep them out of sight by putting it in the trunk.
- Pets in cars—never leave your pet in the car, especially in warmer temperature.



Neighbourhood Safety

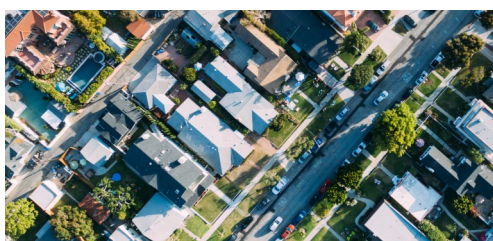
Crime can happen to anyone, anywhere. Residential related property crime comes in many different forms and one of the most common is burglary. Break-ins can be costly, both financially and emotionally. Costs of home repairs, insurance deductible, replacement of stolen items, missed time from work, and most importantly, loss of your sense of privacy and safety in your own homes. Good news is that, people can take plenty of preventative measures to protect their homes and neighbourhoods. Working together with neighbours and family members, having extra set of eyes and ears when you can't be there makes a huge difference in minimizing crime and creating a safer community. It is always better to prevent a crime from happening than have to try to resolve it after it has happened.

Neighbourhood safety requires a team effort, but it starts with you. What can you do to make your neighbourhood a safer place? Here are some ways to make your neighbourhood safer:

- ◆ Know the people in your neighbourhood—familiarize yourself with neighbours and their vehicles so that you can recognize suspicious people and activities in your area.
- ◆ If you see something, say something—report all suspicious person and activity to the police. Don't forget to let your neighbours know as well.
- ◆ Keep your neighbours informed—let your trusted neighbours know that you will be away for a few days. Have them pick up your newspaper, mail and report any suspicious behaviour around your home if they see it.
- ◆ Improve security at entry points—install motion-detector lights in the back/side of your house, security system, and secondary locks on all doors and windows.
- ◆ Lock all doors and windows—check every time before you leave the house. This includes the door between the garage and the house.
- ◆ Make sure your garage door is fully closed—before driving away and before heading inside your house.
- ◆ Never leave anything out in plain sight inside your car—don't give anyone any reason to target your car. Bring your garage door opener inside with you, otherwise thieves can use it to gain access to your garage and possibly your home if they break into your vehicle.

Security has to be habitual. It should become second nature to you to secure doors and windows, to turn on your alarm system and cameras, and to turn on motion-sensor lights before heading out. Improving and installing preventative measures yet not use it, does nothing to prevent burglary.

Be a proactive member in your community to promote safety. Contact us today, to start a new Block Watch group or join an existing one in your neighbourhood.



What is ransomware?

Ransomware is a type of malicious software that is often downloaded onto your devices after you click on infected attachments, links or pop-up ads. It denies a user's access to their files and systems until ransom is paid. Criminals will often threaten to permanently destroy your data or release your data publicly if you do not pay in time. They usually ask for payment in digital currency due to its difficulty in tracing. Other form of payment could be gift cards or prepaid credit cards.

There is no guarantee that criminals will unlock your files and systems after ransom is paid. It can also be difficult and sometimes impossible to recover encrypted files, it is best to protect yourself against a ransomware attack by preventing the initial download of malware onto your devices.

- ◆ Do not answer suspicious emails and do not click on any links in them.
- ◆ Be cautious of any unsolicited email.
- ◆ Ensure a backup plan for your data that is consistent and frequent.
- ◆ Install reputable, up-to-date anti-malware and anti-virus protection software.
- ◆ Scan all software and files downloaded from the internet prior to executing.



To start a Block Watch Group

Interested in starting a Block Watch group? Let us tell you a little about Block Watch! Block Watch is a program that brings the police and the communities together. This program helps you build connections and relationships with people in your neighborhood and the police while striving for the common goal of crime prevention.

Select a Captain/Co-Captain

- ◆ Each Captain/Co-Captain must submit an application and complete a Police Information Check

Recruit and build your group

- ◆ Recruit homes that are near to you. To build an effective Block Watch, try to involve 50-75% of households in your area. We will provide you with recruitment packages.

Complete activation of your team

1. **Complete** Block Watch Captain/Participant training - Register as many of your group as you can for a virtual training session.
2. **Submit** your participating household list.
3. **Qualify** for Block Watch street signs once above steps are completed.

If you are interested in creating a Block Watch group in your area, email us your name and address at blockwatch@richmond.ca or call 604-207-4829.

BUSINESS LINK

WORKING TOGETHER TO PREVENT CRIME

NEWSLETTER

Cashing in on Crime Prevention: Tips to Securing Your Cash

Many businesses have cash registers in their store or restaurant. They often have procedures to clear out the cash before the night ends such as moving the cash to a secured safe or delivering the money to the bank. However, even with all these careful procedures, thieves will often find a way to steal cash from the business. Therefore, businesses can use certain methods to minimize the stolen goods.



Below are some tips for cash crime prevention:

- Have good cash control by keeping nothing in your cash drawer when closing your business.
 - ◊ By doing so you are removing the opportunity for crime. If there isn't anything to steal, why would they try to break in?
- Keep your cash register locked after use.
- Have signs that say you don't carry cash overnight.
- Keep your front doors and windows clear of signs and posters so that the business is visible by employees and outside observers. The front of your cash register area where the customers would stand should be clearly visible to outside observers as well as it provides a line of sight to spot out suspicious activities. If a break in were to happen, people might be able to see the crime happen and call the police.
- Have the cash register and safe bolted down securely to the counter or the ground.
 - ◊ Thieves will sometimes steal the entire cash register and safe if it is not bolted to the ground or to a secure surface.
- Make sure you have the correct type of safe in your store.
 - ◊ There are different types of safes that you can purchase at the store. However, choosing the right safe will make it harder for thieves to steal the money. Make sure to purchase commercial grade safes instead of residential safes.
- Install security cameras around your point of entries and the area near your cash register.
 - ◊ Security cameras can be your extra pair of eyes when you are away. Sometimes they can be a deterrence for thieves as they do not want to get caught. If they do commit a crime, then security cameras can be used to provide evidence.