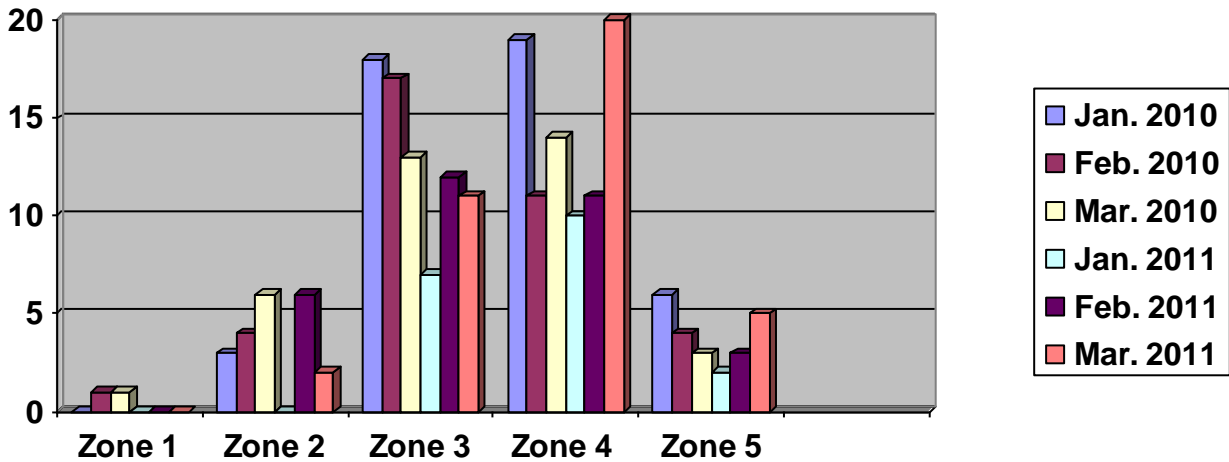




## Commercial Break and Enters for: January, February and March 2010 & 2011



**For information on how to increase your business security, please visit:**

**[www.richmond.ca/businesswatch](http://www.richmond.ca/businesswatch)**

A typical organization loses about five per cent of its annual revenues to fraud. Protect your business from cybercrime with firewalls, anti-virus programs, passwords and controls for employees working outside the office on personal computers. Remember, information can be removed easily from office computers with portable memory drives.

One of the biggest trends that affect businesses are scam artists taking advantage of the public's eagerness to embrace new technology and services by committing fraud. Protect yourself, your computer and your business by:

1. Backing up your files and storing them in a different location;
2. Protect your e-identity by using different user ID / password combinations for different accounts and avoid writing your passwords;
3. Activate your firewall as it is your first line of cyber defense; they block connections to unknown or bogus sites; and
4. Browse the Internet safely. Be cautious when giving out personal information such as your name, address, phone number or financial information.

Richmond RCMP Business Watch's goal is to provide the business community with crime prevention tips to help protect their property and create a safe working environment. **Richmond businesses can request a free security assessment by calling: 604-207-4790.**

**To receive email alerts of neighbourhood commercial break and enters, register your business name and street address at [RCMP\\_Business\\_Watch@richmond.ca](mailto:RCMP_Business_Watch@richmond.ca)**