

Appendix B Fraser River Estuary Management Program Area Designations

Definitions For Area Designation Categories Schedule 1

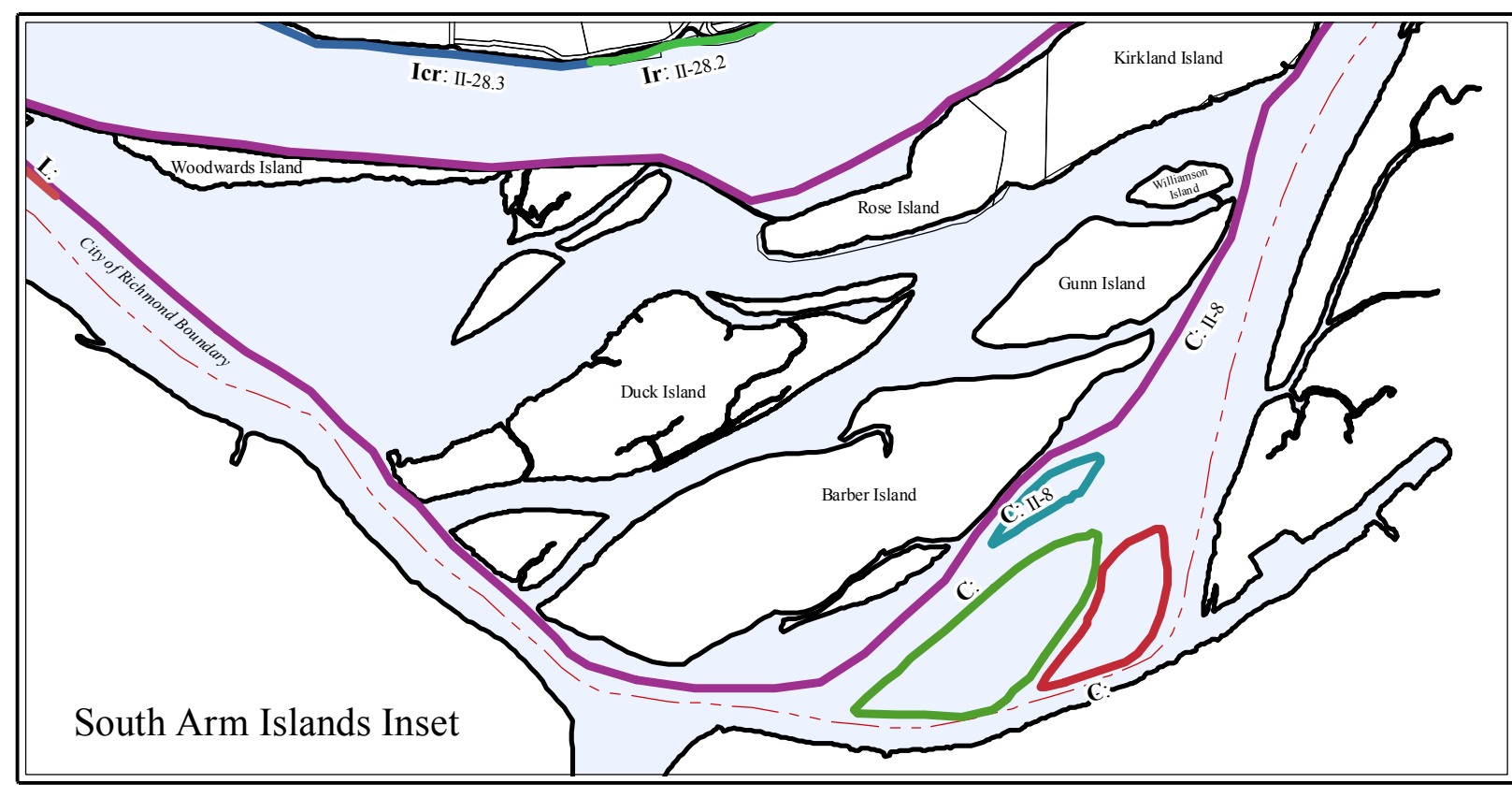
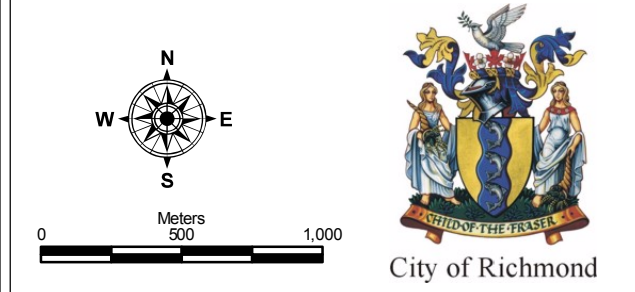
- C Conservation**
Areas of habitat where the primary use is the maintenance area enhancement of continued biological productivity. Conservation areas may be used for activities which do not impair the continued biological productivity of the area.
- L Log Storage**
Areas where the primary use is for log storage consistent with the Fraser River Estuary Management Program guidelines for log storage.
- R Park / Recreation**
Areas designated for public open space and recreation.
- P Port / Terminal**
Land and water with close proximity to navigation channel, good land transportation connections and sufficient open space for upland development of the terminal. This land and water to be used for berthing of vessels, the handling and storage of cargoes and/or passengers, in or outboard.
- I Industry**
Land and water designated for industries that require water-borne transportation, surface use of the water or use of submerged lands in their operation.
- W Water Oriented Urban**
Areas of urban residential and commercial activities involving waterfront use.
- U Undetermined Use Areas**
Refer to Schedule 2. These are areas where a process has been set up to come to agreement on future use of the estuary.

Interpretation of Designations

Designation : Management Unit
e.g. Pc : II-27.2
Capital letters denote Primary Uses
Small letters denote Secondary Uses

Originally Endorsed July, 1991
Revised June 21, 2006
Prepared by Frank Sciberras

Note:
This map is intended to show the Area Designations under the agreement between the City of Richmond and the FREMP Partners.
The Designations indicate how foreshore and upland activities will be coordinated for specific areas in the estuary.



City of Richmond Boundary extends approximately 2.25 km, north of No. 1 Road.