



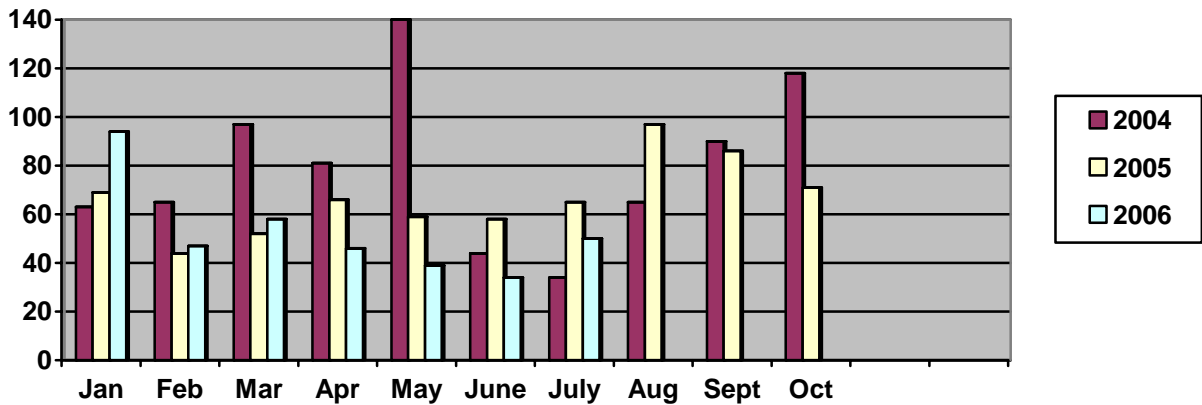
Richmond RCMP  
 Crime Prevention Unit  
 Business Watch

This is the Richmond RCMP Crime Prevention Unit's e-mail newsletter. Registered businesses will also receive an e-mail to inform them of commercial break and enters that occurred in their area. If you do not want to receive this e-mail, please send a return e-mail to request that your business is removed from our distribution list.

**Business Security Inspections:**

Call the Richmond RCMP Crime Prevention Unit to schedule an appointment to inspect your business's current security measures including a written report outlining areas of improvement. Call (604) 207-4790 for a free security inspection.

**Commercial Break and Enters January – October 2004, 2005 and 2006**



	Jan	Feb	Mar	Apr	May	June	July	Aug	Sept	Oct
2004	63	65	97	81	140	44	34	65	90	118
2005	69	44	52	66	59	58	65	97	86	71
2006	94	47	58	46	39	34	50	*	*	*

\* Figures not yet available.

**Most Common Target:** Computers, therefore, the RCMP strongly recommend all desktop computers are bolted to the desk or floor, and laptops are locked in a secure location or taken off-site.

**Most Common Point of Entry:** Through glass front doors, the RCMP strongly recommend that all glass front doors have security film or window bars installed, however, personal safety must always be taken into consideration when installing such products.