



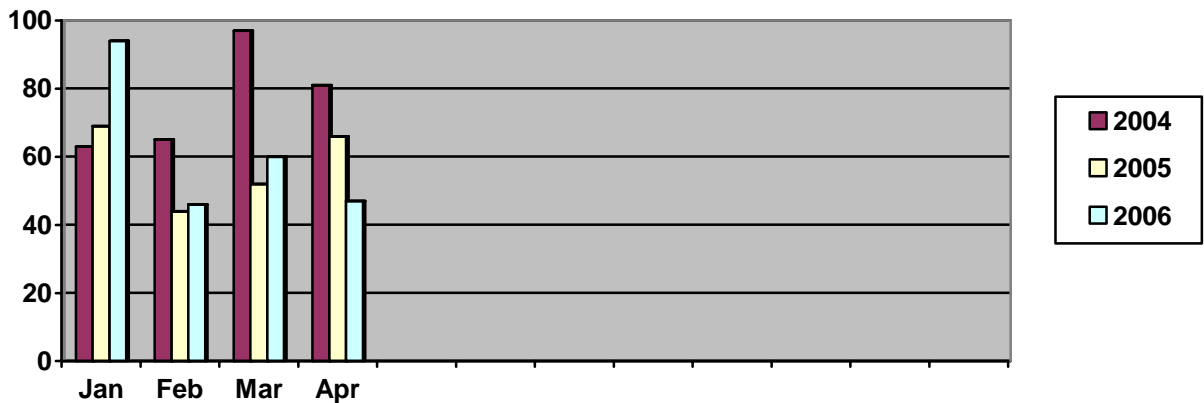
Richmond RCMP  
 Crime Prevention Unit  
 Business Watch

This is the second edition of the Richmond RCMP Crime Prevention Unit e-mail newsletter providing businesses with crime prevention information. Registered businesses will also receive electronic notification to inform you of commercial break and enters that have occurred in your area. If you do not want to receive this e-mail, please send a return e-mail to request that your business is removed from our distribution list.

**Business Security Inspections:**

Call the Richmond RCMP Crime Prevention Unit to schedule an appointment to inspect your business's current security measures and give you a written report outlining areas of improvement. Call (604) 207-4790 for a free security inspection.

**Commercial Break and Enters January – April 2004, 2005 and 2006**



|      | Jan | Feb | Mar | Apr |
|------|-----|-----|-----|-----|
| 2004 | 63  | 65  | 97  | 81  |
| 2005 | 69  | 44  | 52  | 66  |
| 2006 | 94  | 46  | 60  | 47  |

**Most Common Target:** So far in 2006, 63 computers have been stolen, therefore, the RCMP strongly recommend that all desktop computers are bolted to the desk or floor, and laptops are kept in a secure location.

**Most Common Point of Entry:** Entry was gained in 96 break and enters through glass front doors, the RCMP strongly recommended that all glass front doors have security film or window bars installed, however, personal safety must always be taken into consideration when installing such products.