



City of Richmond

Report to Committee

To: *To Parks, Rec & Culture - Jan 25, 2006 To Council - Feb 13, 2006*
Parks, Recreation and Cultural Services
Committee
Date: December 19, 2005

From: Terry Crowe
Manager, Policy Planning
File: 11-7000-09-20-046

Re: **Garden City & Cook Road/Chandler Development Public Art Project**

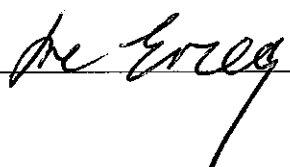

Staff Recommendation

That the artwork donated by Chandler Development at Garden City & Cook Road to the City of Richmond, as presented in the report dated December 19, 2005 from the Manager, Policy Planning, be approved.



Terry Crowe
Manager, Policy Planning

Att. 3

FOR ORIGINATING DIVISION USE ONLY			
ROUTED TO:	CONCURRENCE		CONCURRENCE OF GENERAL MANAGER
Parks	Y <input checked="" type="checkbox"/>	N <input type="checkbox"/>	
Recreation & Cultural Services	Y <input checked="" type="checkbox"/>	N <input type="checkbox"/>	
Budgets	Y <input checked="" type="checkbox"/>	N <input type="checkbox"/>	
REVIEWED BY TAG	YES <input checked="" type="checkbox"/>	NO <input type="checkbox"/>	REVIEWED BY CAO
			YES <input checked="" type="checkbox"/>
			NO <input type="checkbox"/>

Staff Report

Origin

The purpose of this report is to recommend that the proposed donation of artwork sponsored by Chandler Development at Garden City and Cook Road to the City of Richmond be approved.

Findings of Fact

Richmond Public Art Program

The Richmond Public Art Program sets a framework for creating opportunities for people to experience art in everyday life and for artists and the community to participate in the design, look and feel of Richmond.

Development Proposal

Chandler Development initiated a 211-unit, two tower and town home residential complex located in the McLennan North neighbourhood at 6440 Garden City Road just north of the City's new Garden City Park. As part of the rezoning and development permit, which was approved by Council on September 6, 2005, Chandler Development agreed to integrate a public art project at the value of \$135,000.00 on the development's site or vicinity. If the project is located on any City property, staff will ensure that the City approves site obtained.

"Community Rise", Garden City and Cook Road/Chandler Development Public Art Proposal

A Call for Submission was executed Spring 2005 with a deadline of June 13, 2005 (**Attachment 1**). The role of the artist/team is to identify an artwork along the development's edge, mid-block trail or connection to Garden City Park that celebrates the community by making visual the "Community Rise" theme. The "Community Rise" concept refers to the changing community, its character and environment. The artwork should celebrate and connect the community with emphasis on images that represent the rising of the new community. The artwork will demarcate and make a neighbourhood a special and recognizable place. The total budget available to the artist/team from Chandler Development is \$135,000.00.

A 5-person panel comprised of Richmond residents, members of the arts community, Richmond business operator, landscape architect and the developer (Brian Foreman, Tamaka Fisher, Gwen Boyle, Joe Fry and Wendy Young/Janine Lim/Sheryl Lim) juried the sixteen submissions on July 6, 2005 and short-listed four artists. The 4 artists (Carlos Basanta, Jeanette Lee, Paul Slipper and Sergei Traschenko) presented preliminary concepts to the panel on September 22, 2005 and a decision was made to offer the project to artist Paul Slipper. The Richmond Public Art Commission has reviewed this proposal and endorses it as presented (**Attachment 2**). The proposed 12-15 piece artwork acknowledges the changing community and the growth that Richmond is going through. The combined use of the fern and figure as images represents the growth of humans from child to adult and the relationship of humans to nature.

Proposed Location and Site Plan

The proposed locations for the artwork are at the entrance to Tower I (located on Cook Road east of Garden City), in the mid-block trail between Tower I and II and on City property at the north side of Garden City Park (**Attachment 3**).

Staff Comments of Proposed Artwork Donation to the City

Staff and the Richmond Public Art Commission recommend that Council support this proposal of donated artwork by Chandler Development.

Next Steps

- If approved, the developer, City and artist will coordinate the public art installation.
- If approved, the developer will transfer legal ownership of the work to the City.
- It is anticipated that the public art project will be installed by early 2007.

Financial Impact

The artwork will require minimal periodic power washing at an approximate cost of \$200 per time every two or three years. City funds would be allocated out of the City's annual operating budget.

Conclusion

The proposed artwork by Paul Slipper, sponsored and donated by Chandler Development, represents a significant gift to the City of Richmond. It is a continuing show of support by developers for the importance of Public Art to neighbourhoods and cities.



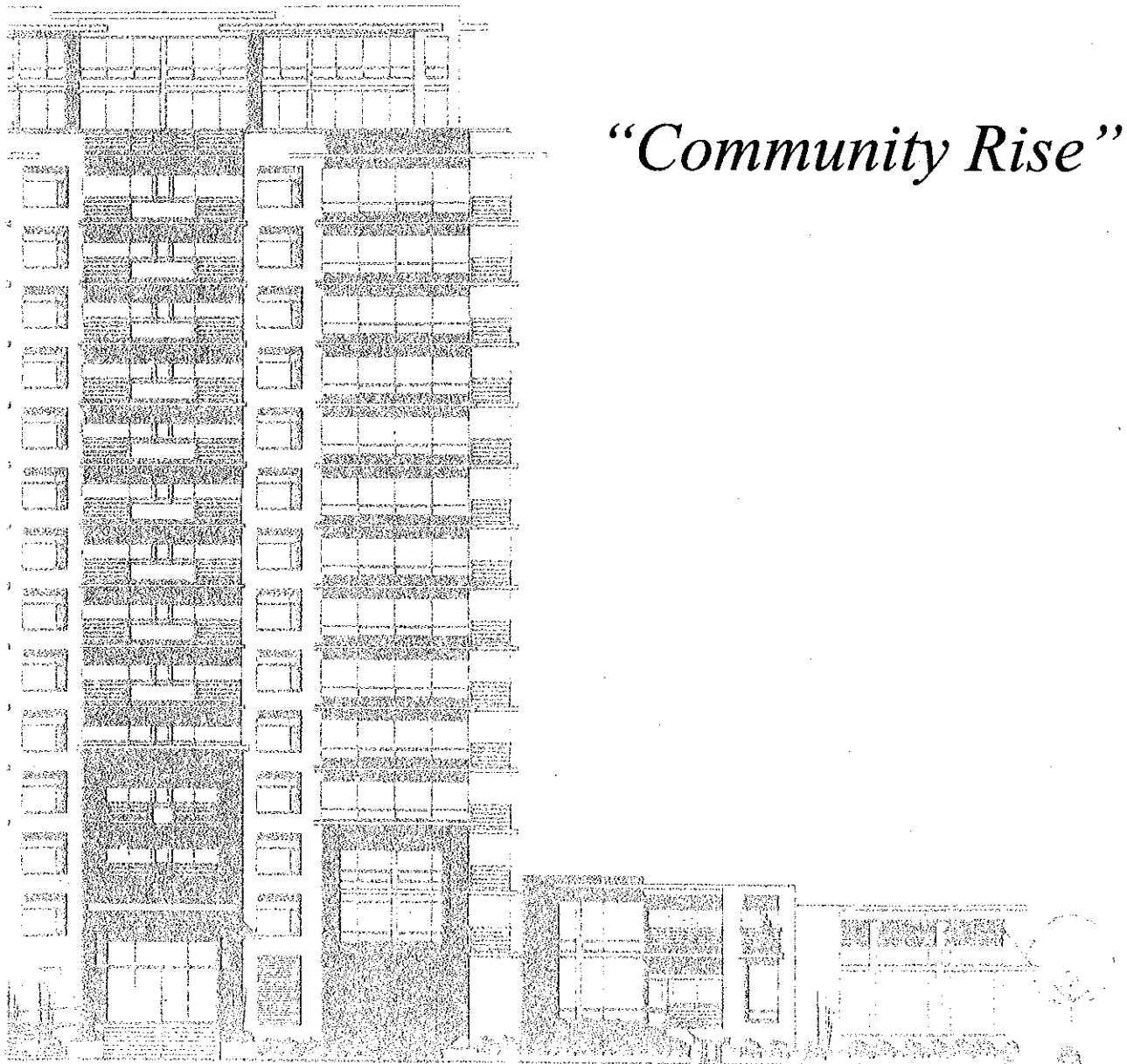
Suzanne Greening
Arts Coordinator
(640 231-6433)

SEG:seg



Richmond Public Art Program

Garden City & Cook Road Public Art Project Competition Terms of Reference



“Community Rise”



Richmond Public Art Program

Garden City & Cook Rd PUBLIC ART PROJECT Competition Terms of Reference

“Community Rise”

Invitation for Artist/Artist Team Submission

Artists and artist teams are invited to participate in a two-stage competition to provide a site-specific work of public art as part of a high-rise residential development, under these terms of reference. Each artist/team is limited to one entry. All information about the project is contained herein.

Background

The proposed two tower 211-unit residential development by Chandler Development Inc. is located in the McLennan North neighbourhood at 6440 Garden City Road and 9071 9211 Alberta Road (just north of Blundell Road). The development will be completed in 2006.

The McLennan North neighbourhood in which the development is to be located is an area in transition. A new Garden City Community Park, just located immediately south of the development, is being developed. Development immediately surrounding the site includes new high-rise and townhouse developments.

The Public Art Project

The public art project opportunity is to be located between Garden City Road, Katsura Street and Garden City Community Park visualizing the community's sense of place, belonging and linkages to the new McLennan North community (see **Appendix A**). Alternatively, the artwork can be located along the development's internal mid block trail that connects Cook Road to Alberta Road and the Garden City Community Park

The public art theme “Community Rise” refers to the changing community, its character and environment. The role of the artist/artist team is to identify an artwork along the development's edge that celebrates and connects the community with emphasis on images that represent the rising of the new community.

The artist/artist team should look at how materials, forms, and spaces can be designed to enrich the project and the public experience of it. The art could be placed into or on the sidewalk, attached to the street lighting standards or located at the entries to the development.

The concept of the artwork proposal is open to the artist discretion. It can be functional, landscape oriented, or whimsical and one, which presents an artistic surprise to the passing public. Simplicity in design is encouraged, and one that complements or appropriately reflects its location within an established residential area.

The public art project at Leighton Court Gardens is constituted under the mandate set out by the City of Richmond Public Art Commission.

The Budget

The total budget available to the artist(s) or artist team, inclusive of all expenses (including GST), will be \$135,000. The artist role will be to manipulate, change, add, or reconfigure the materials budgeted along the street boulevard area noted on the attached plan.

The budget for the artworks must include the cost of fabrication, delivery, installation, artist design fee, and all other fees, insurance, disbursements, and contingency. The artist(s) or artist team(s) will be asked to work with the development's landscape architect and/or general contractor in order to integrate their work and schedule into the schedule of the project as a whole.

Site Considerations

The artwork should:

- Consider the site, building development and design, and the context of the community within which it is situated;
- Be durable, permanent and safe;
- Address the passing pedestrian activity; and
- Display a high quality of technical skill, imagination and creativity.

Schedule

- | | |
|--|--|
| • Terms of reference available | May 3th, 2005 |
| • Artist Information meeting with design team | May 25th, 2005, 6:30 PM |
| • Richmond City Hall | Meeting Room 2.004 |
| • Deadline of submission Stage 1 | June 13th, 2005, 5 PM |
| • Selection of short listed artist(s)/team | June 14th - June 23rd, 2005 |
| • Presentation of sketch or maquette Stage 2 | July, 2005 |
| • Selection of artist(s)/team | July, 2005 |
| • Contract signed with developer | September, 2005 |
| • Completion of work | August, 2006 |

Selection Panel & Process

The process of selecting the final artist(s)/team for the project will occur in two stages by the selection panel. The selection panel will be comprised of a representative from the developer, two members from the arts community, an independent architect/landscape architect, and an area resident.

The panel will review all submissions and shortlist up to a maximum of three artist(s)/teams for the project to provide a detailed sketch or maquette, a budget time schedule and other pertinent information.

The short listed artist(s)/teams will be paid a detailed sketch or maquette fee of \$500 per artist/artist team.

Following the short listed interview/presentation, the panel will recommend one artist/team for the project. The recommended artist/team must be prepared to see the artwork completed and installed within the time as agreed with the project developer, or their representative.

Selection Process & Criteria

Stage 1 Artist(s)/Team Review

- Compliance with the competition requirements
- Artist/team previous experience, including artistic achievements
- Appropriateness of the concept and design to the site.
- Imagination and artistic merit.

Stage 2 Short Listed Artist Review

- Appropriateness of the concept and design to the site.
- Imagination and artistic merit
- Feasibility in implementation
- Interview and presentation of the detailed proposal/maquette
- The artist's ability to work co-operatively with project landscape architect, contractor and developer.

The panel will select the artist/team proposal, which in their judgement, best meets the above criteria.

Submission Requirements for Stage 1

- A **typed statement** of artwork project intent, rationale, and description (**2 page maximum**).
- Curriculum vitae or **resume of past work**, including any public art commissions.
- A **sleeve of up to 10 labelled slides**, accompanied by a slide list.
- A **copy quality 8 ½" by 11"** conceptual sketch of the proposal.
- A rough budget and list of materials
- A 9 X 12 **self addressed stamped** envelope.

Submissions not meeting the above requirements may not be considered.

Contract

A contract between the recommended artist or team and the developer/owner of the property will be drawn up, with the assistance of the City. The contract will include a schedule of payment and fabrication and installation. The budget for the commission must include all costs including artist's fees, other fees, GST, insurance fabrication, delivery, installation, clean-up, and any consultant's fees. The artist or team will also be expected to produce regular progress reports to the developer/owner and the City.

The final work and requisite documentation will become the property of the developer. At project completion, the artist will provide the developer/owner and the City with a detailed art documentation report, as listed in the Richmond Public Art Program Report (copy available from the City of Richmond).

Mail or Drop Submission to:

Kari Huhtala

City of Richmond

6911 No. 3 Road

Richmond, B.C. V6Y 2C1

Or, email submissions to:

khuhtala@city.richmond.bc.ca

The submission deadline for Stage 1 is 5:00 PM, June 13th, 2005.

Confidentiality

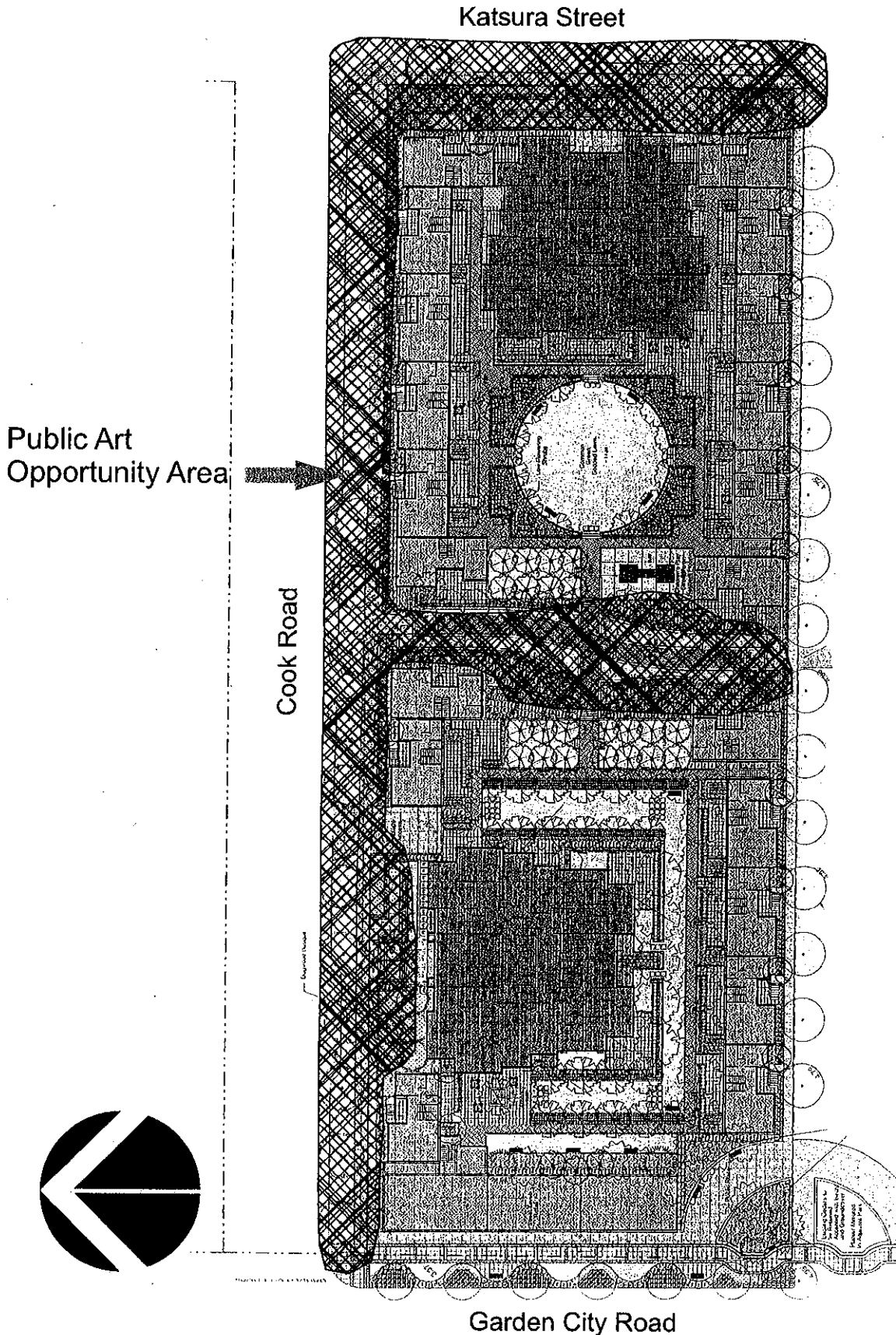
All information provided to, or created by the artist/team and selection panel shall be considered confidential until such time as it has been released or made public by the City of Richmond.

Project Information & Contacts

- Julian Ward, Chandler Development Inc. (604) 692-0111 or email julian@chandlerdev.com)
- Kari Huhtala, City of Richmond (604) 276-4188 or email khuhtala@richmond.ca)

Appendix A

Richmond Public Art Program Garden City & Cook Rd Public Art Project



Attachment 2

May 29th 2005

Kari Huhtala
City of Richmond
6911 No. 3 Road
Richmond B.C. V6Y2C1

Re: Garden City & Cook Road Public Art Project Competition
"COMMUNITY RISE"

Hello,

I am a Vancouver based stone sculptor, (living in North Vancouver) and have been a full time professional artist since graduating from Emily Carr School of Art in 1983. Having sold and shown internationally, my work has received numerous awards throughout North America, being featured at the 1996, 1998 and 2000, Bellevue Sculpture Show, in Bellevue, Washington, as well as in the Toyamura International Sculpture Biennale, Japan. Commissions and acquisitions include works for Pepsi Cola in Bellingham Washington; Delta Bow Valley in Calgary Alberta; The Chateau Whistler, The Vancouver International Airport; Vancouver BC, as well as various other private and corporate works.

Artists Statement:

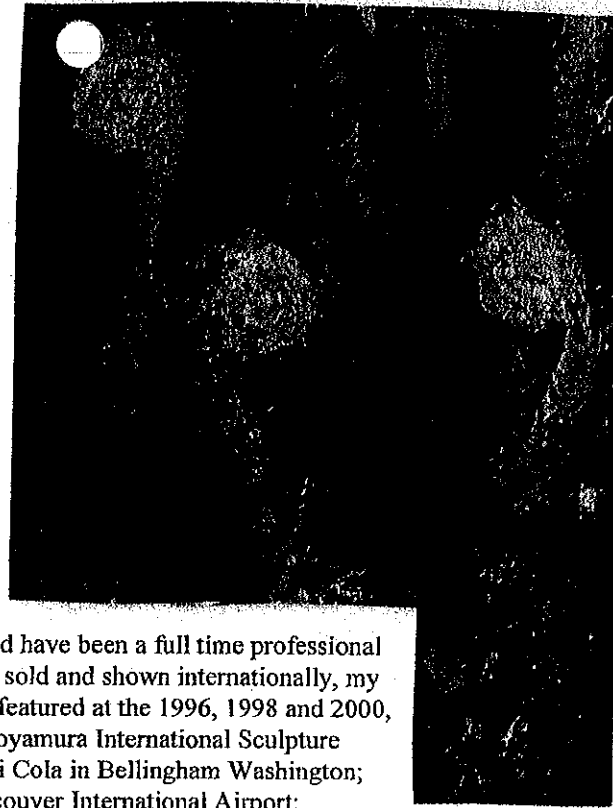
The main emphasis in my sculpture now places a greater importance on the natural shape of the stone. Using minimum carving or additions on the stone I transform the raw material into a recognizable sculptural form. As in the past sculptures I incorporate satire and humour into a number of my works.

The sculptures theme for "Community Rise" is to create excitement and a sense of something new while still maintaining the emphasis on the changing community. For the first part, creating excitement I will incorporate nature (plants and flowers) which are constantly evolving and exhibiting their uniquely impressive displays throughout the different seasons. Secondly I have combined nature with the human figure, which will be carved in multiple different positions that will relate to the rising of the new community.

The sculptural forms that I am presenting for "Community Rise" has originated from the unique growing characteristic style of the Fern plant. The new small stem begins rising from the ground (commonly called fiddleheads) where the tiny curled up leaves will soon start to unfurl and begin to grow into a mature plant. My sculptures concept will replace this grace-full unfurling of the leaf with the unfolding of the human figure. Each figure, in different stages of unfolding will be carved in the power-full medium of stone. Ranging in size between 2' and 10' these flowing forms will be located throughout either designated area. Approximately 15 to 20 of the sculptural forms will be grouped in various formations. The sculptures will be very versatile in their placements. Several groups could be located near street lamps, rising out of the sidewalks and placed at the entrances to the development. This random placing of these sculptures will simulate the way the fern plants are found growing in the ground.

The sculptures will celebrate and connect to all ages of people in the community as the carved stone figures will represent the very young (curled up small figures) to adults (large fully stretched figures). A bond will form between people and the sculptures, as each sculpture will relate to various ages and feelings that would be found in the "rising of the new community".

The material (stone) I will use for this project will add a sense of permanence and elegance to each of the individual sculptures. Stone, itself being such a rich material, originating from the earth will enhance the overall experience of viewers enjoying these emerging sculptures. The many various colours of stone can be used to represent the different ethnic people living at or around the new residential complex. Each of the unfurling rising figures emerges off a single stainless pole (similar to ferns). This pole will be of varying thickness to replicate the various stages of the fern plant and also to accommodate the larger stone figures.



The material (stone) I will use for this project will add a visual sense of permanence to each of the individual sculptures. The round river stones utilized to create the sculptures will be indigenous to the Lower Mainland (we have some of the best and varied stones in the world). All of the stones will be granite a material much harder than a stone like marble. Granite is a very durable stone and will require very little maintenance. The granite will remain in its natural unaltered state, which are round and oval shapes in numerous different sizes. The texture is smooth to touch from all the years of water rolling and tumbling the stones around in the river. In each figure a stainless steel rod will run through the centre of each sculpture then glued making them virtually impossible to break. The stainless rods will be supported in the ground by either one of two methods, first is to cement the poles into large concrete blocks and the second option is to have the pole inserted into the ground and secured with "earth anchors".

In conclusion I am very excited about this project, as it will produce a unique blend between nature and the human form. This sculpture series will be very versatile in its placement at the several possible locations working with the landscaping as well as complimenting man made objects. The passing public will understand and relate to the sculptures intent, as we are all continually encountering nature and the human figure. Finally this figurative sculpted river proposal for "Community Connections" will mirror Richmond itself an island bordered by rivers on two sides and provide a unique bond between this neighbourhood sculpture and the entire municipality of Richmond.

Yours Truly,

A handwritten signature in black ink that reads "Paul Slipper". The signature is written in a cursive, flowing style with a large initial 'P'.

Paul Slipper



GARDEN CITY & COOK ROAD
PUBLIC ART COMPETITION

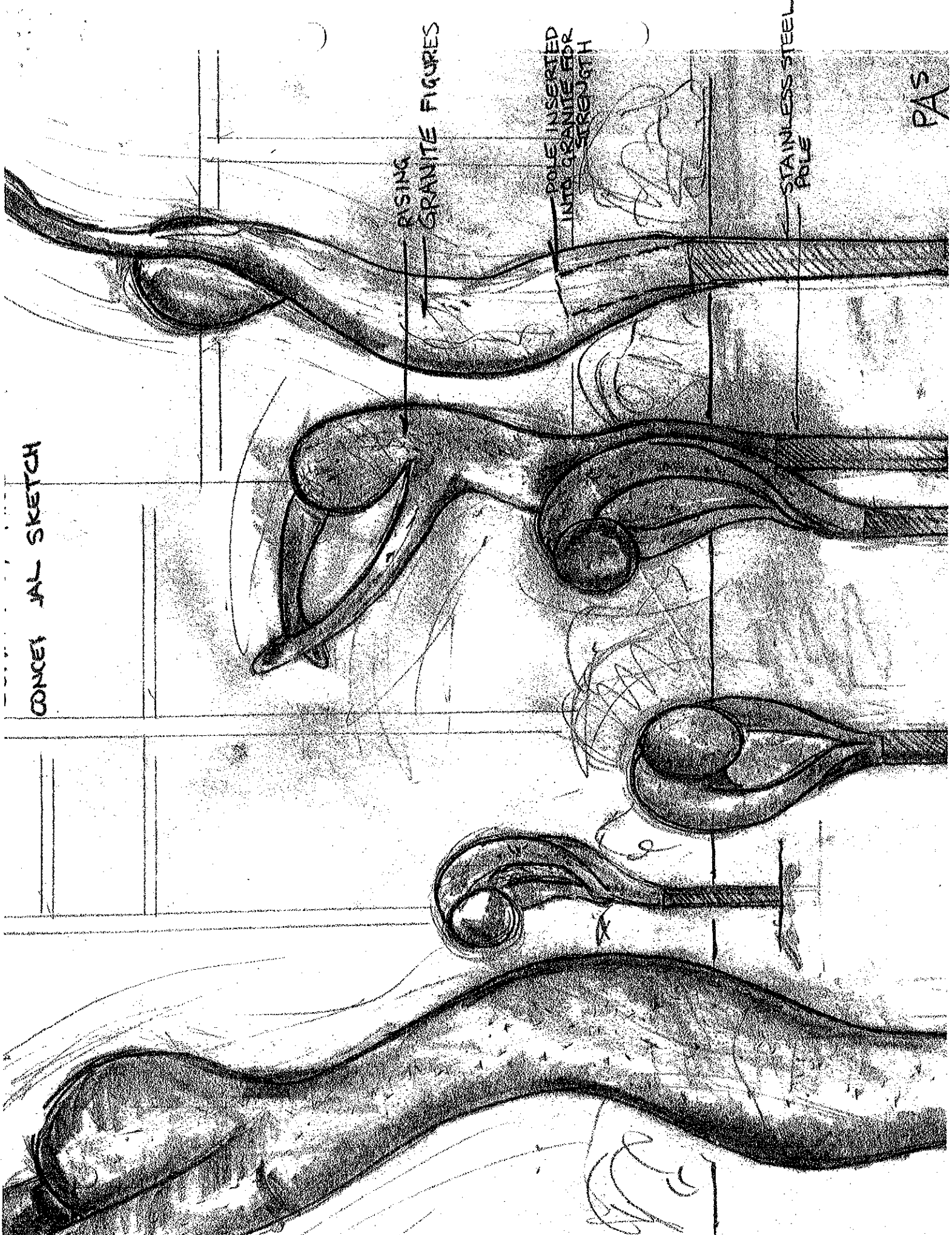
September 20th 2005

“Community Rise”

Outline

- 1 - Sculptures will fuse together and create a bond between the plant and the human form.
- 2 - The sculptures will be versatile in their placement (groups on sidewalks, gardens, near streetlamps).
- 3 - The human forms in the fern leaves will be modelled from people of different ethnic backgrounds.
- 4 - Sculptures will relate to people of all ages.
- 5 - Sculptures will compliment landscaping.
- 6 - Use of beautiful local marble from Texada Island.
- 7 - The stone will have a sealer applied to the surface and require no maintenance.
- 8 - Approximately 15-20 of the sculptural forms will be located throughout the complex.
- 9 - Size will range from 2-10' in height.

CONCEPT SKETCH



RISEING
GRANITE FIGURES

POLE INSERTED
INTO GRANITE FOR
STRENGTH

STAINLESS STEEL
POLE

PAS

GARDEN CITY & COOK ROAD
PUBLIC ART COMPETITION

MAY 29th 2005

“Community Rise”

BUDGET GUIDELINES

Materials;

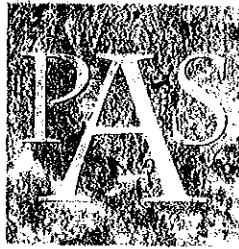
Granite & Transportation-----	10,000.00
Stainless Rod-----	5000.00
Concrete & Anchoring systems-----	7000.00
Installation-----	8000.00
Misc.-----	10,000.00
Labour-----	87,000.00
GST-----	7000.00

TOTAL-----134,000.00



PAUL SLIPPER

PAUL SLIPPER



SCULPTOR

EMILY CARR COLLEGE OF ART AND DESIGN (HONOURS 1983)

SELECTED GROUP EXHIBITIONS

2003	ARTROPOLIS, VANCOUVER, BC
2002	BELLEVUE SCULPTURE EXHIBITION, BELLEVUE, WA
2001	REDMOND CITY SCULPTURE SYMPOSIUM, WA
	ARTROPOLIS, VANCOUVER, BC
2000	BELLEVUE SCULPTURE EXHIBITION, BELLEVUE, WA
1999	TOYAMURA INT'L SCULPTURE BIENNALE, JAPAN
	BELLEVUE SCULPTURE EXHIBITION, BELLEVUE, WA
1998	BELLEVUE ART MUSEUM, BELLEVUE, WA
	FOOTHILLS ART CENTRE, DENVER, CO
	GROVE GALLERY, WHISTLER, BC
1997	GROVE GALLERY, WHISTLER, BC
1996	BELLEVUE ART CENTER, BELLEVUE, WA
	WHATCOM MUSEUM OF ART, BELLINGHAM, WA
	FOOTHILLS ART CENTRE, DENVER, CO
1995	TOYAMURA INT'L SCULPTURE BIENNALE, JAPAN
	PITT INTERNATIONAL GALLERY, VANCOUVER, BC
1994	SHEPARD GALLERY, WHISTLER, BC
	STUART LEVY FINE ART, NEW YORK, NY
1993	STUART LEVY FINE ART, NEW YORK, NY
	ARTROPOLIS, VANCOUVER, BC
	FOOTHILLS ART CENTRE, DENVER, CO
	SHEPARD GALLERY, WHISTLER, BC
1992	SHEPARD GALLERY, WHISTLER, BC
	CROWN GALLERY, VANCOUVER, BC
1991	GEO ARTE GALLERY, LOS ANGELES, CA
	SHEPARD GALLERY, WHISTLER, BC
1990	CROWN GALLERY, VANCOUVER, BC
	SHEPARD GALLERY, WHISTLER, BC
	KARNEY GALLERY, TORONTO, ON
1989	KARNEY GALLERY, TORONTO, ON
1988	CROWN GALLERY, VANCOUVER, BC
1985	EQUINOX GALLERY, VANCOUVER, BC
1984	ROBSON SQUARE, VANCOUVER, BC
1981	HYATT SCULPTURAL EXPO, VANCOUVER, BC

SELECTED SOLO EXHIBITIONS

1992	ART/LA 92, LOS ANGELES, CA
1989	NANCY POOLE STUDIO, TORONTO, ON
1986	ROCHE BOBOIS, VANCOUVER, BC
1985	PHOENIX GALLERY, VANCOUVER, BC
1984	ACCENTS ON ART, VANCOUVER, BC

SELECTED COMMISSIONS

2002	FRAN BELZBERG, VANCOUVER, BC
1997	PEPSICOLA, BELLINGHAM, WA
1994	CYNTHIA BELZBERG, PALM SPRINGS, CA
1993	OWNER, SHEPARD GALLERY, WHISTLER, BC
	PITWAY CORPORATION, CHICAGO, IL
	ARQUI CONCEPTO, CANCUN, MEXICO
1992	OWNER, INUIT GALLERY, VANCOUVER, BC
1991	OWNER, INUIT GALLERY, VANCOUVER, BC
1990	BRIDLE POST CENTRE, TORONTO, ON
1988	ARTHUR GRIFFITH, VANCOUVER, BC
	OWNER, INUIT GALLERY, VANCOUVER, BC
1987	DELTA BOW VALLEY, CALGARY, AB
1986	ROYAL WINNIPEG BALLET, WINNIPEG, MB

GARDEN CITY ROAD

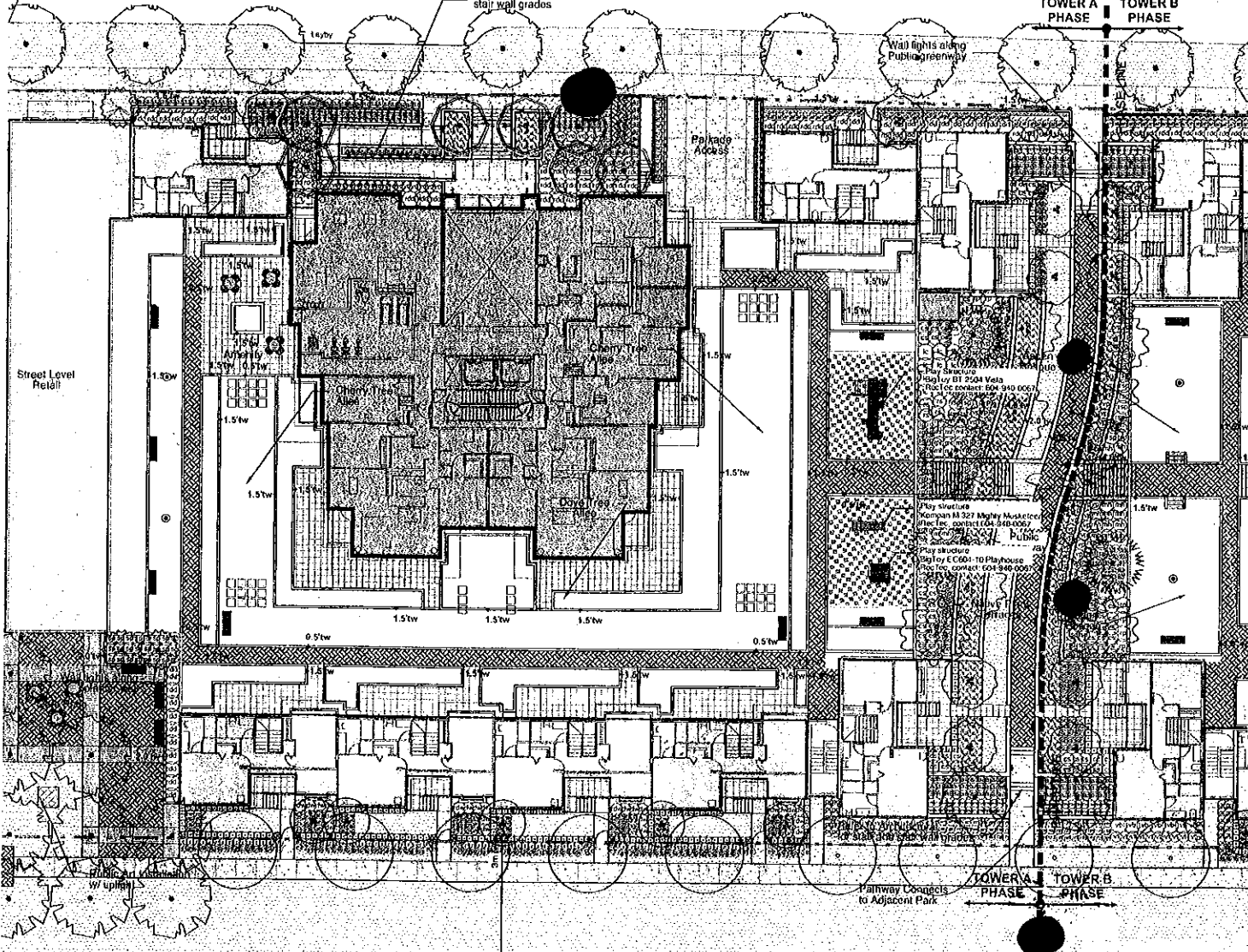
COOK ROAD

Paving Treatment As Per City Of Richmond Standard (see Detail D 9 on C4)
- Double Row Of Roman Pavers On both Edges Of The Sidewalk Within The 2.5m Walkway
- Broom finished, Scored Concrete With No Trowel Marks
- Adjust Spacing Panels To Ensure Whole Squares Rather Than Half Squares
- Band Of Roman Pavers To Be Aligned With Street Lights

Refer to Architectural for ramp and stair wall grades

Trail lights along Public Greenway

TOWER A PHASE TOWER B PHASE



All work within the 17m Alberta Road R.O.W. to be performed by the City of Richmond at the City of Richmond's expense

Garden City Park

