



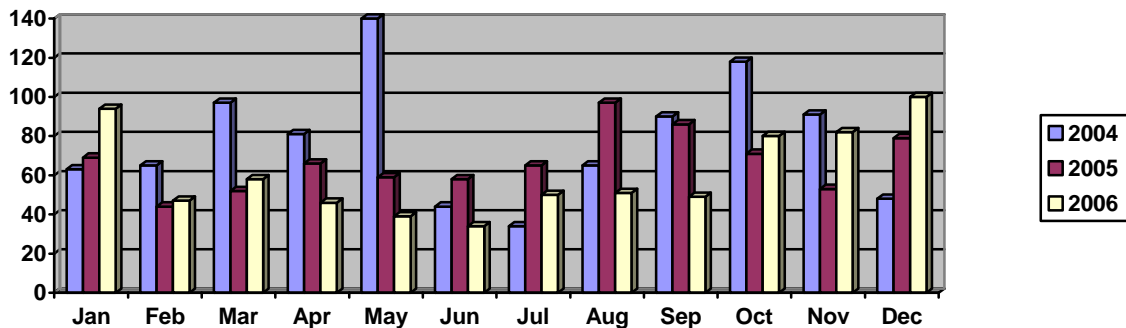
Richmond RCMP
 Crime Prevention Unit
 Business Watch
 Spring 2007

This is the Richmond RCMP Crime Prevention Unit's e-mail newsletter. Registered businesses will also receive an e-mail to inform them of commercial break and enters that occurred in their area. If you do not want to receive this e-mail, please send a return e-mail (including your street address) to request that your business is removed from our distribution list.

Business Security Inspections:

Call the Richmond RCMP Crime Prevention Unit to schedule an appointment to inspect your business's current security measures including a written report outlining areas of improvement. Call (604) 207-4790 for a free security inspection.

Commercial Break and Enters January – December 2004, 2005 and 2006



	Jan	Feb	Mar	Apr	May	June	July	Aug	Sept	Oct	Nov	Dec
2004	63	65	97	81	140	44	34	65	90	118	91	48
2005	69	44	52	66	59	58	65	97	86	71	53	79
2006	94	47	58	46	39	34	50	51	49	80	82	100

Most Common Target: Computers, therefore, the RCMP strongly recommend all desktop computers are bolted to the desk or floor, and laptops are locked in a secure location or taken off-site.

Most Common Point of Entry: Through glass front doors, the RCMP strongly recommend that all glass front doors have security film or window bars installed, however, personal safety must always be taken into consideration when installing such products.

Identity Theft crime has been associated with the growth of networked computers and Internet access, but it cannot be blamed on technology alone. Plenty of identity thieves steal victim's identities by digging through dumpsters. One of the best self-defense measures businesses can implement is to shred information before discarding it. Staff should be instructed to use a shredder to destroy unneeded customer or employee records so that the information cannot practicably be read or reconstructed.