



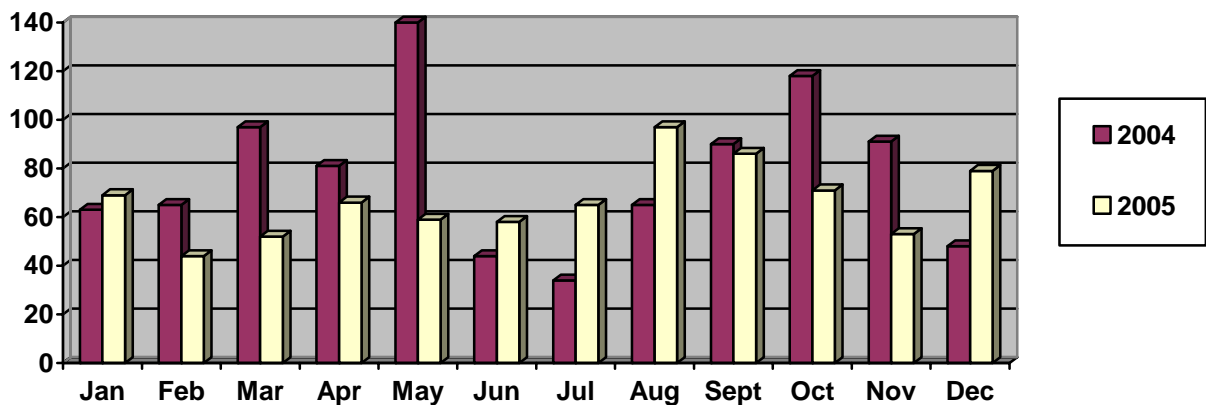
Richmond RCMP Business Watch

Welcome to the first edition of the new Richmond RCMP Business Watch newsletter providing businesses with crime prevention information. This e-mail newsletter will be circulated on a quarterly basis. Starting in February, 2006, the Richmond RCMP Crime Prevention Unit will be sending an e-mail notification to Richmond businesses to inform you of commercial break and enters that have occurred in your area. If you do not want to receive this e-mail, please send a return e-mail to request that your business is removed from our distribution list.

Business Security Checks:

The Richmond RCMP Crime Prevention Unit will schedule a free appointment to inspect your business to review your current security measures with you and give you a written report outlining areas of improvement. Call (604) 207-4790 for a free security inspection.

Commercial Break and Enters 2004 and 2005



	Jan	Feb	Mar	Apr	May	Jun	Jul	Aug	Sept	Oct	Nov	Dec	Total
2004	63	65	97	81	140	44	34	65	90	118	91	48	936
2005	69	44	52	66	59	58	65	97	86	71	53	79	799

Top 3 Hot Spots: 20000 Westminster Hwy., 11800 Horseshow Way, 5600 Parkwood

Most Common Targets: Laptops, computer monitors and CPUs.

Most Common Point of Entry: Glass front doors, bay doors, and through interior drywall walls.

How to Protect Against the Most Common Point of Entry: Glass front doors: install polycarbonate plastic, security film and/or window bars. Bay doors: install padlocks, a “barn door” brace and/or removable bollards (also do not store empty pallets outside your business as they are commonly used to build a platform to ram a stolen vehicle into the bay door). Drywall walls: install plywood on your interior walls.