

7.1 SEWERS



Lulu Island Sewage Treatment Plant

ISSUE:

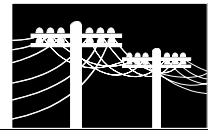
Richmond has primary responsibility for collecting and moving liquid waste from system users to the Lulu Island treatment facility (primary and secondary treatment). From a land management perspective, short- and long-term growth should be assessed against existing and projected sewage line and treatment capacity, and be located to make best use of existing servicing capacity, so as to minimize the need for building new sewer infrastructure. Therefore, new sewerage services should be budgeted and developed in areas targeted for redevelopment, and, where possible, funded as part of new development proposals.

OBJECTIVE 1:

Maintain an efficient, adequate, and self-supporting sewage and wastewater collection and disposal system which meet the needs of the public in an environmentally responsible manner, and expand new sewerage services to areas earmarked for new development.

POLICIES:

- a) Maintain and improve the existing sewer system through preventive maintenance and on-going appraisal, and replace aging sewer infrastructure through the City's Capital Plan process;
- b) Improve efficiency of the sewerage system by working with the GVRD to:
 - Reduce inflow and infiltration into sewer lines;
 - Reduce waste volume through water conservation;
 - Improve controls of contaminants entering the sewage system;
 - Pilot innovative water conservation and waste recycling and reuse methods;
 - Increase sewer treatment capacity at the Lulu Island treatment facility;
- c) Ensure that older areas of the city are supported by sewer utilities at service levels compatible with the needs of the present and future land uses;
- d) Require all new developments to be connected to sanitary sewers, except those that can be provided with acceptable on-site sewage disposal system, if a sewer is not available;



- e) Discourage the development of on-site sewage disposal systems on lots in the non-agricultural areas;
- f) In the development of new sewer systems, give priority to those unsewered areas developed at urban densities, where health hazard or demand exists;
- g) Encourage the establishment of waste traps in businesses to reduce the pumping and cleaning of sewer systems;
- h) Participate in the planning, development and implementation of the Regional Liquid Waste Management Plan.

Sanitary Sewer Distribution

