

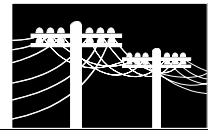
7.0 CITY INFRASTRUCTURE

Sewers
Irrigation & Drainage
Water Supply
Energy
Solid Waste & Recycling
Flood Protection
Road Construction
Street Lighting
Street Trees

City infrastructure or utilities are an integral part of urban development in Richmond. The City continues to demonstrate its commitment to good servicing by focusing development of its lands for urban uses in the western portion of Richmond and in the Hamilton community. Richmond has an overall policy of constantly maintaining and upgrading its public works infrastructure and services. The provision of utilities is expensive, and must be scheduled in a highly effective and efficient manner. The City's Capital Program is an ongoing planning and budgeting process for allocating City funds for construction and maintenance of these facilities, services, and requirements to meet the needs of future land uses. Since December 1967, the City, by policy, has required that developers of land provide and/or cost share for all associated public utilities necessary to support new development.

The challenges ahead include long-term replacement and rehabilitation of sewer, water, roads, and stormwater systems; cost-effective management of waste disposal, collection and recycling; and efficient water quality treatment and distribution. A growing population will require additional infrastructure improvements.

No comprehensive approach to public utility planning and construction can be effective unless there is close coordination with the provision of urban facilities and services. These utilities must be planned and programmed to support the level of land use activities proposed by the Official Community Plan (OCP).



The provision of public utilities are guided by:

- *Orderly land development;*
- *Orderly service extension;*
- *Capital efficiency;*
- *Cost equity;*
- *Coordinated plan of civic actions;*
- *Annual Capital Program;*
- *Maintenance and replacement of existing infrastructure.*

Guiding Principles

Richmond's public utility objectives and policies are based on the following guiding principles:

- To ensure the optimum ratio of annual maintenance costs to physical infrastructure value is consistent with the City's aims of environmental stewardship, social equity, and economic development;
- To maintain the service reliability of the City's infrastructure;
- To ensure optimum efficiency in all areas of maintenance;
- To maximize the efficient use of resources by customers;
- To minimize the cost and public inconvenience of road and right-of-way trenching activities;
- To operate the City's public works infrastructure consistent with Richmond's and the GVRD's growth strategies;
- To coordinate City program expenditures with the provision of urban facilities and services;
- To maximize the benefit of public investment in infrastructure and services;
- To expand waste reduction and water conservation initiatives;
- To manage the fiscal impacts of future servicing needs;
- To ensure accessibility for all.