



## 4.3 PEDESTRIANS

### ISSUE:

To walk, roll and bike short distances benefits personal and environmental health. Travel distances to shops, schools, job sites, and recreation areas are getting smaller as more people live closer to these facilities. To encourage walking, the conditions for walking along streets, walkways and pathways need to be appealing (pleasant, safe, direct, and convenient).

### OBJECTIVE 1:

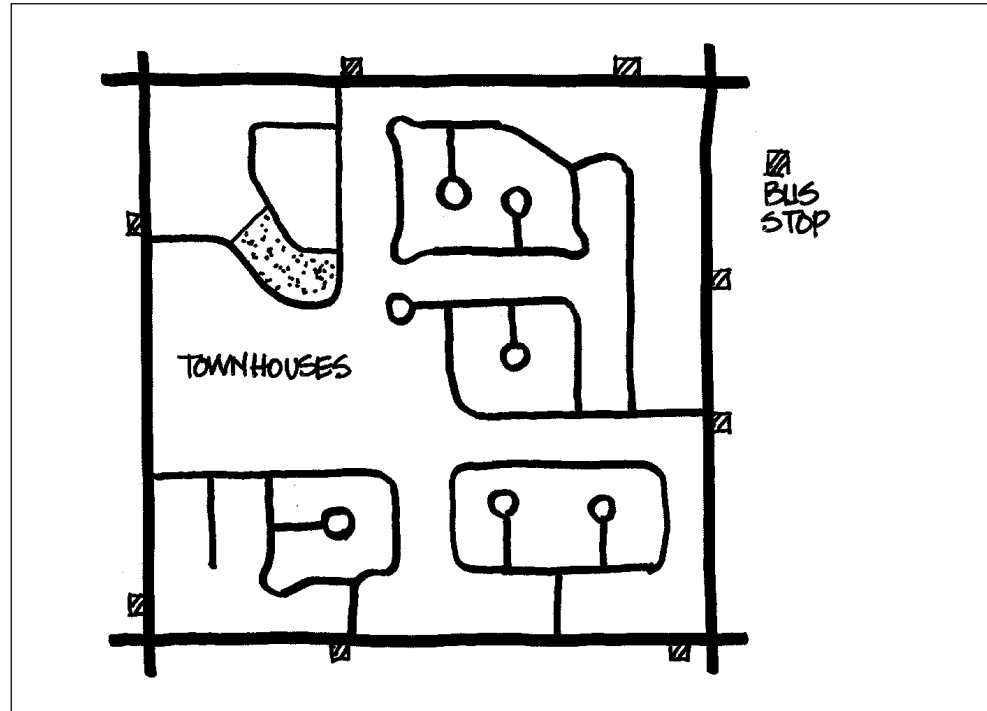
**Make walking the primary alternative for travel over short distances.**

### POLICIES:

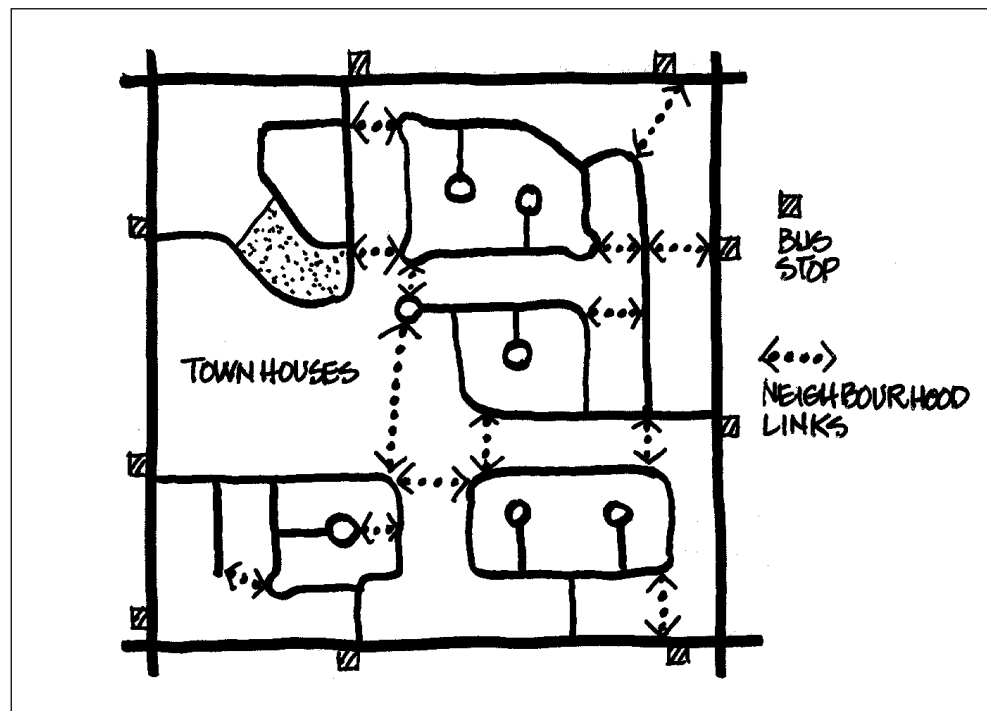
- a) Place high priority on implementing continuous and direct sidewalks, walkways and pathways to schools, neighbourhood service centres, recreational destinations, bus stops, and other high-volume pedestrian areas;
- b) Introduce shorter blocks in high-volume pedestrian areas;
- c) Support the “main street” function of high-volume pedestrian areas through special road design measures which calm traffic;
- d) Increase pedestrian safety on sidewalks and pathways by providing adequate lighting and public visibility to minimize the potential for crime;
- e) Provide appropriate measures of protection from moving traffic at crosswalks, e.g. traffic signals, overhead signs, curb extensions, special pavement marking and texture, and other traffic calming measures;
- f) Provide extended crossing times, wheelchair ramps, and audible signals at crosswalks for people with disabilities and special needs;
- g) Provide landscaped boulevards and, where appropriate, curb parking as roadside protection for pedestrians from moving traffic;
- h) Encourage continuous weather protection for pedestrians in the City Centre, at neighbourhood service centres and other retail districts, e.g. canopies, awnings;
- i) Encourage “walk to school” programs, e.g. walking school buses, to increase safety and to reduce school-related automobile trips;



- j) Require direct and convenient designated walkways from the street to building entrances of major developments which are located some distance away from the street front.



*Typical subdivision with limited pedestrian access*



*Example of enhanced neighbourhood*