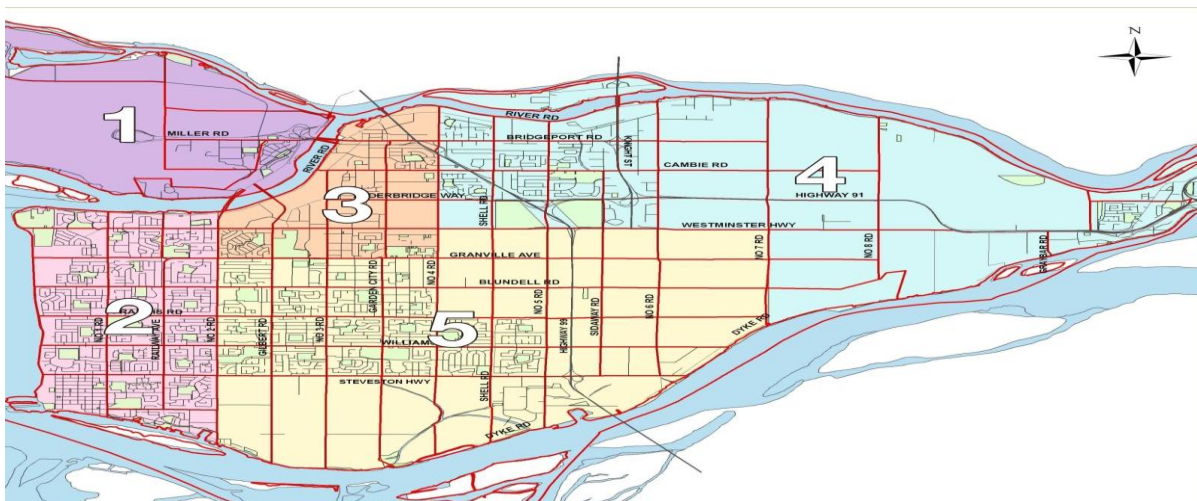
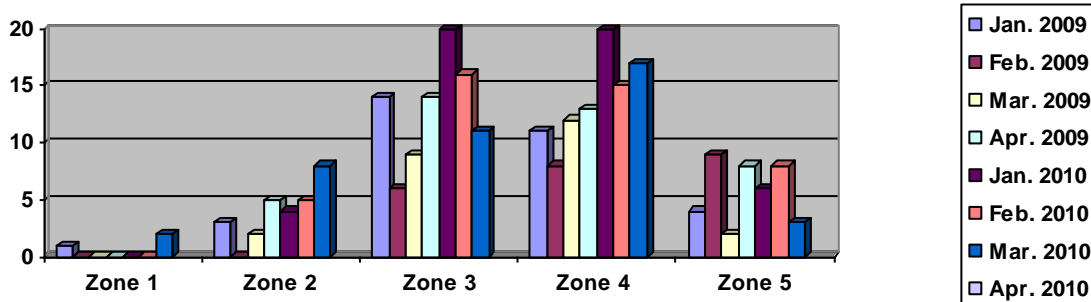




Business Security Assessments:

Richmond businesses can request a free security assessment to help secure their property and create a safe working environment by calling 604-207-4790. An RCMP officer will assess your business and provide you with written recommendations regarding possible security enhancements, including upgrading doors, windows, locks etc.

Commercial Break and Enters for: Jan., Feb., March and April 2009 & 2010



Most Common Point of Entry was through doors. To improve the security of your doors, use good quality deadbolts (with 1 1/2 inch throw – the throw is the part that extends into the door frame when locked) on all exterior doors. Security film or plexiglass should be installed on glass doors or windows near the door locks to reinforce the glass. Install anti-pry plates on all exterior doors. Anti-pry plates are bolted to the door and cover the crack between the door and door frame. For more information on securing your business, please visit: www.richmond.ca/businesswatch

If you discover a break and enter, do not touch anything! Call 9-1-1.

If the suspect has left, or if someone has attempted to break in, do not touch anything and call the Police non-emergency number at 604-278-1212.

Report all criminal activity to the Police. If a suspect is present, call 9-1-1. If no suspect is present, call the Police non-emergency number at 604-278-1212. To view Richmond neighbourhood criminal activity maps, visit: www.richmond.ca/crime

Richmond RCMP Crime Prevention
 Phone: 604-207-4790 Fax: 604-713-2349
 E-mail: RCMP_Business_Watch@richmond.ca