

Scientific Name	Common Name
HESPERIIDAE	SKIPPERS
<i>Thymelicus lineola</i>	European Skipper
<i>Ochlodes sylvanoides</i>	Woodland Skipper
PAPILIONIDAE	SWALLOWTAILS
<i>Papilio rutulus</i>	Western Tiger Swallowtail*
PIERIDAE	WHITES
<i>Neophasia menapia</i>	Pine White
<i>Pieris rapae</i>	Cabbage White*
LYCAENIDAE	GOSSAMER WINGS
<i>Incisalia iroides</i>	Western Elfin
<i>Incisalia eryphon</i>	Western Pine Elfin
<i>Strymon melinus</i>	Gray Hairstreak
<i>Celastrina echo</i>	Western Spring Azure
<i>Everes comytas</i>	Eastern Tailed Blue*
<i>Vanessa cardui</i>	Painted Lady*
<i>Vanessa atalanta</i>	Red Admiral*
NYPHALIDAE	BRUSHFOOTS
<i>Polygonia satyrus</i>	Satyr Anglewing
<i>Limenitis lorquini</i>	Lorquin's Admiral
<i>Nymphalis antiopa</i>	Mourning Cloak*

\*Common Butterflies at the Richmond Nature Park



Red Admiral

For more information on butterflies, please visit the following links:

North American Butterfly Association:  
[www.naba.org](http://www.naba.org)

BC Conservation Data Centre:  
[www.env.gov.bc.ca/cdc/](http://www.env.gov.bc.ca/cdc/)

A Biophysical Inventory of the Lulu Island Bog, Richmond, British Columbia:  
[www.geog.ubc.ca/richmond/city/butterflies.html](http://www.geog.ubc.ca/richmond/city/butterflies.html)

E-Fauna BC:  
[www.efauna.bc.ca/](http://www.efauna.bc.ca/)

Butterfly images courtesy Ian Lane and flickr.com - Creative Commons

## RICHMOND NATURE PARK: CONTEXT MAP



The Nature Park is open daily from dawn to dusk.  
The Nature House is open daily 9:00am-5:00pm  
*Admission is by donation*

For more information about Richmond Nature Park and its programs please call 604-718-6188 or email [nature@richmond.ca](mailto:nature@richmond.ca)

**Richmond Nature Park**  
11851 Westminister Highway, Richmond, B.C. V6X 1B4 Tel: 604-718-6188 Fax: 604-718-6189

To learn more about Richmond's many parks and facilities, please visit the Parks, Trails & Cycling web page at [www.richmond.ca](http://www.richmond.ca)



# Butterflies



# discover Richmond...



Painted Lady



Painted Lady

## Butterflies

### Life Cycle

The life cycle of a butterfly begins the moment an egg is laid. Eggs, each the size of a grain of sand, are deposited on carefully selected host plants. After about 1-3 weeks the eggs hatch into miniscule larvae, or caterpillars, that spend the next 4-10 weeks growing and moulting as they eat the plant they hatched on. When fully grown, the caterpillars stop eating and moult one last time to reveal a silken sheath called a chrysalis.

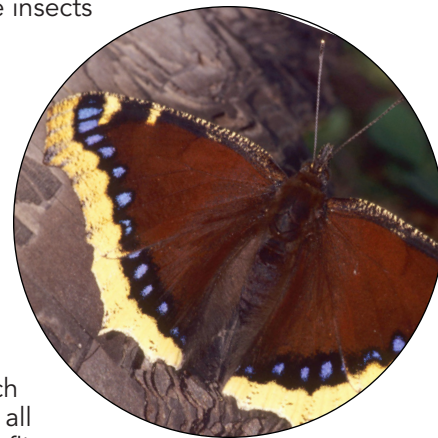
Within the chrysalis the caterpillars pupate, that is, undergo metamorphosis, and are transformed into adult butterflies. Some species spend the entire fall and winter in their chrysalis; others pupate and emerge in as little as 10 days during the summer.

The adult butterflies that push their way out of a chrysalis have limp, wet wings that must be pumped full of blood to expand. Once their wings are dry butterflies become creatures of the air and fly off in search a mate.

Butterflies are ephemeral creatures, thus mating and egg laying must occur within the 1 or 2 week life span of the adult.

## What is a butterfly?

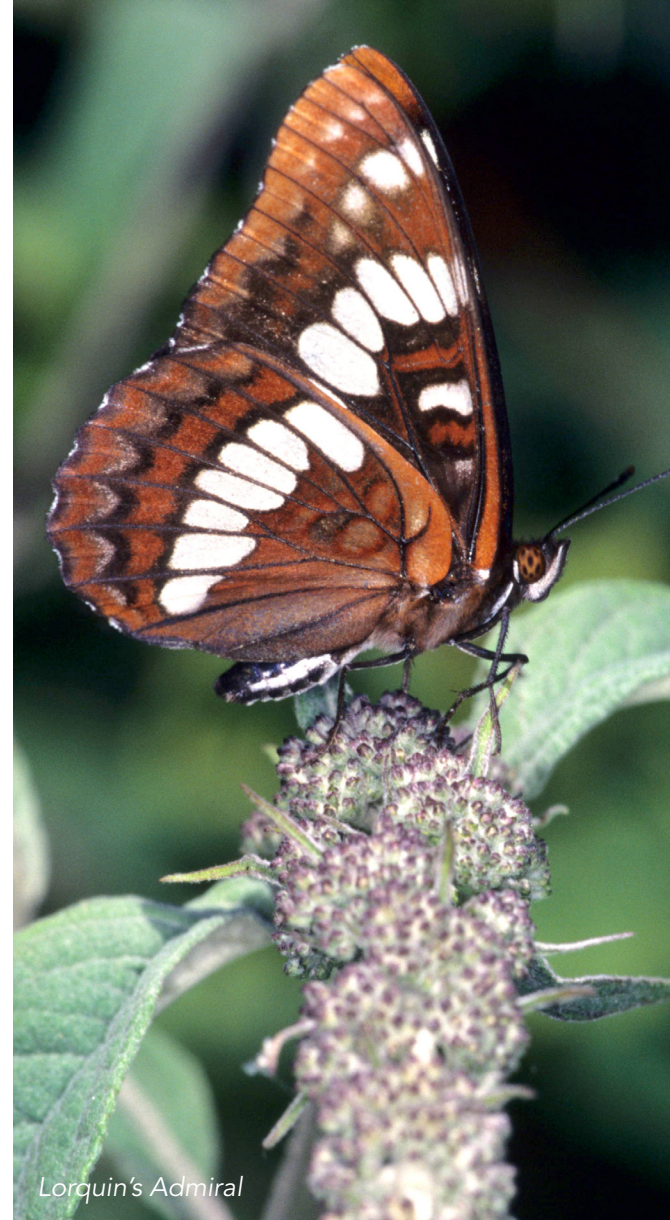
Butterflies are insects in the order Lepidoptera, which means they have scaly wings. The myriad of tiny scales that coat their wings form the colour and pattern unique to each species. Like all insects, butterflies have 2 antennae, 3 body parts, 6 legs, and an exoskeleton.



Mourning Cloak

Butterflies and moths look quite similar but there are some essential differences:

	BUTTERFLIES	MOTHS
Antennae	Threadlike with clubbed tips	Threadlike or feathery but without clubs
Colour	Often bright and easy to see	May be dull for camouflage
Body Shape	Usually slim	May be bulky and hairy
Resting Posture	Wings held upright over body when at rest	Wings flat when at rest
Pupae	Pupate in a chrysalis created from the final moult	Pupate in a cocoon spun from silk
Activity	Diurnal	Nocturnal



Lorquin's Admiral

## Butterflies in British Columbia

In BC, the greatest diversity of butterflies occurs in the open grasslands of the dry interior zones where plentiful sunshine ensures a diversity of herbaceous plants for the larva to feed on and dry warm weather suited to the activity of these cold-blooded creatures. Coastal BC is isolated from the interior by high mountains and characterized by cool, wet weather – conditions that produce dark coniferous forests and limit the number and diversity of butterflies present.



Satyr Anglewing

## Conservation Issues

Butterfly populations are threatened by habitat loss, habitat degradation due to such things as pesticide application and the elimination of food plants, and global climate change. Of note, is the general lack of data and information about butterflies that would allow us to understand life cycles, population dynamics and species requirements and make informed decisions regarding species and habitat management.



Cabbage White